

A photograph of a woman in a purple top and black skirt standing next to a young child in a dark t-shirt and khaki pants. They are in an outdoor setting with several blue tents in the background. The ground is dirt. A decorative graphic of white diagonal lines is overlaid on the image.

**TO SAVE LIVES  
AND RELIEVE SUFFERING**

**PRODUCTS FOR CIVIL SECURITY  
AND HUMANITARIAN AID**



**LUBAWA**  
**GROUP**

Lubawa Corporate Group is the production and service company with a global reach which consists of dynamically developing companies.

The parent company is the Lubawa S.A. which is listed on the Warsaw Stock Exchange. Its core activity is the manufacture, processing and sale of specialised technical woven and knitted fabrics offered to public and business customers. Within the Lubawa Group are manufactured and sold the specialized systems of personal protection, military assets and collective and also advertising products.

Goods and services are sold at every stage of the woven and knitted fabric treatment process– from raw fabric to a technologically advanced product. The close cooperation of our companies affects the competitive advantage of Lubawa Group. This partnership allows using whole potential of the group and having a full production cycle in the Group.

Our advanced technical backup facilities make it possible for us to implement modern solutions and attractive offers. Lubawa Group is able to respond to markets needs and has the potential to effectively expand its business.

**Lubawa S.A.**

ul. Staroprzygodzka 117  
63-400 Ostrów Wielkopolski  
POLAND

tel.: +48 62 737 57 77  
info@lubawa.com.pl

Katarzyna Górna  
Product Manager/ Sales Representative  
for humanitarian aid organizations

tel.: +48 602 537 448  
kagorna@lubawa.com.pl

[WWW.LUBAWA.COM.PL](http://WWW.LUBAWA.COM.PL)

# TO SAVE LIVES AND RELIEVE SUFFERING

The use of innovative technologies and solutions makes us able to improve already existing products and create new ones. Through continuous development, we strive to ensure that the environment in which we live is becoming safer and more prepared for unexpected random events. We take up new challenges every day. Thanks to our practical experience we can minimise potential threats more effectively.

# content



## 01. Tents

N6	06-07
Aid and bedroom tent	08
NS-97	09
3x3	10-12
6x6	13-14
Falcon	15-16
Tentar	17-18
NP 16, 26, 38	19-20
Bedroom tent	21-22
WNP	23-24
TNP	25
PSP DK38	26
Decontamination cabin 1 segment	27
Decontamination cabin 3 segments	28-29
Air Pub	30

## 02. Water tanks

100 l closed	32
1000 l	33-34
20 l closed	35
300 l closed	36

## 03. Flood barriers

10 m with internal sleeve	38
10 m standard version	39
10 m with zipper	40
2,5 m and 5 m	41
10 m and 20 m flood mitigation dam	42-43

## 04. Special and protective clothing

High visibility jackets	45-46
Life Jacket 80N	47-48
KR-7 rescue vest	49
Chemical resistant garment	50
Gas-tight training protective suit	51
The Goo-bm suit	52
Titania lightweight bomb suit	53-54
Olympia bomb disposal suit	55-56

## 05. Bulletproof vests

Delta basic UN	58-59
Operator	60-61
Delta	62-63
Defender	64-65
Defender Pro	66-67

## 06. Ballistic inserts

	69-70
--	-------

## 07. Helmets

UN blue/ mch-mid	72-73
------------------	-------

## 08. Masks

CBRN mask	75-76
-----------	-------

## 09. Medical backpacks

PSP R1	78-79
Gecko Med. 45 l	80-81
Med. 25 l	82-83

## 10. RIB boats

Litex 580	85-86
Litex 680	87-88





# MISSION: TO PROTECT PRECIOUS LIFE

In the modern world, dominated by violence and unpredictable natural disasters, what matters most is a quick and effective action taken in order to protect precious human life. Lubawa S.A. aims to help people affected by humanitarian crises, including armed conflict and natural disasters.

The Company manufactures a wide range of products necessary for both efficient and safe measures which exist to save life and health of people living in the areas exposed to war or natural disasters. The Company offers, among others, tents, water containers, special-purpose and chemical protective clothing, medical backpacks, decontamination cabins, flood barriers, bulletproof vests, ballistic plates, helmets and RIB-type boats. Protection of human life and health is our primary aim. Therefore, the products we develop are of the highest quality. They are also adapted for use in all environmental conditions.



# TENTS

Lubawa S.A. provides single tents as well as specialised tents serving as mobile stations or bases, along with a generous selection of accessories. The tents can be used in a variety of conditions. They can be successfully used for the purposes of accommodation, as an office, field hospitals, dining rooms, sanitary tents or warehouses.

---

▶ N6

---

▶ AID AND BEDROOM TENT

---

▶ NS-97

---

▶ 3x3

---

▶ 6x6

---

▶ FALCON

---

▶ TENTAR

---

▶ NP 16, 26, 38

---

▶ BEDROOM TENT

---

▶ WNP

---

▶ TNP

---

▶ PSP DK38

---

▶ DECONTAMINATION CABIN 1 SEGMENT

---

▶ DECONTAMINATION CABIN 3 SEGMENTS

---

▶ AIR PUB

---





# ➤ N6

INTENDED USE OF THE TENT: BEDROOM TENT

LINING:

- LENGTH: 3.10 M
- WIDTH: 2.90 M
- MAX. HEIGHT: 2.20 M
- SIDE HEIGHT: 1.37 M
- WEIGHT: 8.5 KG
- DIMENSIONS OF THE LINING IN THE BAG: APPROX. 0.80X0.37X0.15 M

TECHNICAL SPECIFICATIONS OF THE TENT:

- LENGTH: 3.20 M
- WIDTH: 3.00 M
- SUPPORT POLE HEIGHT: 2.30 M
- SIDE HEIGHT: 1.40 M
- USABLE AREA: 9.6 M<sup>2</sup>
- WEIGHT: 35 KG
- INCLUDING THE TENT CANOPY AND THE FLOOR: 21.50 KG
- TENT FRAMEWORK ALONG WITH THE EQUIPMENT: 5 KG







N°	PART	QUANTITY	DIMENSIONS AND NAME OF A RAW MATERIAL	COMMENTS
1	TENT CANOPY WITH THE FLOOR	1 PC.	COTTON-POLYESTER FABRIC PVC COATED, FLAME-RETARDANT FLOOR	
2	WINDOWS	6 PCS.	HARD PVC FLAME-RETARDANT FILM $\phi$ 320MM	1 RESERVE
3	SIDE LINES WITH HITCHES	10 PCS.	POLYAMIDE $\phi$ 5 MM LENGTH 3,500 MM	1 RESERVE
4	MAIN SUPPORT POLE 3-PIECE SUPPORT POLE WITH A BAR	1 PC.	STEEL TUBE $\phi$ 25 MM, 2,300 MM LONG	
5	SIDE POLES 2-PIECE	11 PCS.	STEEL TUBE $\phi$ 20 MM, 1,400 MM LONG	
6	PEGS FOR TENT ROPES	10 PCS.	METAL SHEET OR L-300 STEEL T-SECTION	1 RESERVE
7	ANCHOR PINS	12 PCS.	GALVANIZED, STEEL, $\phi$ 6	1 RESERVE
8	TENT BAG	1 PC.	CANVAS FABRIC	
9	FRAME BAG	1 PC.	CANVAS FABRIC	
10	EQUIPMENT BAG	1 PC.	CANVAS FABRIC	
11	LINING	1 PC.	FLAME-RETARDANT, COTTON-POLYESTER	
12	LINING BAG	1 PC.	FABRIC CANVAS FABRIC	





# ➤ AID AND BEDROOM TENT

## DIMENSIONS OF THE BASIC VERSION:

- ❑ HEIGHT: 2.2 M
- ❑ WIDTH: 4 M
- ❑ RIDGE LENGTH: 4 M
- ❑ SIDE WALL HEIGHT: 1.25 M
- ❑ DOOR HEIGHT: 1.4 M
- ❑ CENTRE BASE LENGTH: 6.6 M
- ❑ OUTER TENT ROOF CANVAS-POLY-COTTON:350 G/M2 ±15%  
COLOR NATURAL WHITE
- ❑ OUTER TENT WALL CANVAS POLY-COTTON:200 G/M2 ±10%  
IN F COLOR NATURAL WHITE
- ❑ THE INNER TENT CANVAS POLYESTER/COTTON 130 G/M2 ±10%
- ❑ GROUND SHEE WOVEN POLYETHYLENE FABRIC

THE USABLE AREA OF THE BASIC VERSION IS 16 M2. THE TENT IS DEDICATED FOR 5 PEOPLE. IT IS DESIGNED TO SERVE AS A SHELTER FOR GIVING AID TO THE VICTIMS OF DISASTERS. IT IS SUITABLE FOR USE IN EVERY CLIMATE. THE WEIGHT OF THE TENT IS ONLY 55 KG. ONCE PACKED, IT IS EASY TO TRANSPORT. THE COVER IS MADE OF COTTON AND POLYESTER FABRIC WITH WATER-RESISTANT AND UV-STABLE FINISH.

THE WINDOWS ARE EQUIPPED WITH A MOSQUITO NET COMPLYING WITH THE REQUIREMENTS OF WHOPES. THE FLOOR IS MADE OF A COATED POLYETHYLENE FABRIC.



# NS-97

- ✦ TOTAL LENGTH INCLUDING THE APSE: 6,5 M
- ✦ LENGTH WITHOUT THE APSE: 5 M
- ✦ WIDTH: 4.6 M
- ✦ HEIGHT: 2.1 M
- ✦ WEIGHT: 230 KG

IT IS INTENDED FOR GROUP CAMPING, AS A STORAGE FACILITY OR FOR CARRYING OUT ACTIVITIES WHICH REQUIRE PROTECTION AGAINST UNFAVOURABLE WEATHER CONDITIONS.

THE SHAPE OF THE TENT RESEMBLES A CYLINDER CUT THROUGH THE MIDDLE AND THE FACE WALLS ARE MADE OF TWO PARTS BUCKLED WITH LOOPS. WINDOW OPENINGS WITH REPLACEABLE CELLULOID PANES ARE FITTED IN THE SIDE WALLS. TWO ADDITIONAL OPENINGS CAN BE USED TO CONNECT HEAT BLOWERS. THE DESIGN OF THE TENT ENABLES CONNECTING SEVERAL TENTS IN SERIES.

IT IS MADE OF COTTON-POLYESTER FABRIC WITH WATERPROOF, ANTIFUNGAL AND FLAME RESISTANT IMPREGNATION. IT IS ALSO MADE OF COATED FABRIC WITH THE HIGHEST RESISTANCE PARAMETERS, AS WELL AS FUNCTIONAL AND OPERATIONAL QUALITIES. THE TENT CONSISTS OF AN EXTERNAL CANOPY, A LINING, A FLOOR AND A STEEL FRAME. THE SHAPE OF THE TENT RESEMBLES A CYLINDER CUT THROUGH THE MIDDLE AND THE FACE WALLS ARE MADE OF TWO PARTS BUCKLED WITH LOOPS. IN THE SIDE WALLS THERE ARE WINDOW OPENINGS WITH RECTANGULAR CURTAINS MADE OF NET AND THE PRIMARY MATERIAL.

THE ROUND WINDOWS ARE MADE OF RIGID FOIL OR CELLULOID AND ARE FITTED WITH CHIMNEY METAL SHEETS FOR THE PURPOSE OF TRADITIONAL HEATING. TWO ADDITIONAL SLEEVE OPENINGS CAN BE USED TO CONNECT HEAT BLOWERS. THE DESIGN OF THE TENT ENABLES CONNECTING SEVERAL TENTS IN SERIES.

THE USABLE SPACE IS EXTENDED WITH A WIDER APSE. THE WHOLE TENT IS SUPPORTED ON A STEEL FRAME PROTECTED AGAINST CORROSION.



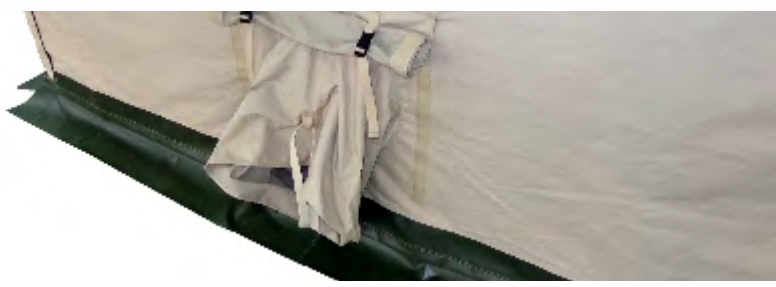


# > 3x3

TENT 3X3 IS DESIGNED TO PROVIDE QUICK AND EASY SURFACE ROOFING AND INSULATION FROM THE WEATHER CONDITIONS. SINGLE FRAME CONSTRUCTION WITHOUT DETACHABLE PARTS, PROVIDES A SMOOTH AND EASY DISASSEMBLY TENT WITHOUT TOOLS. THE TENT CAN BE USED AS A CANTEEN TENT, CATERING TENT, STORAGE TENT. FAST, EASY INSTALLATION, LOW WEIGHT AND SMALL SIZE PACKING, MAKE A TENT CAN BE USED PRACTICALLY EVERYWHERE, AND THUS IT IS EASY TO STORE AND TRANSPORT.

- DIMENSIONS OF THE TENT FRAME:
- ▶ LENGTH „A“: 3 M
  - ▶ WIDTH „A“: 3 M
  - ▶ HEIGHT IN THE CENTER „B“ ÷ „C“: 2,590 ÷ 3,420 M
  - ▶ USABLE AREA: ABOUT 9 M<sup>2</sup>

- SIZE OF TRANSPORT PACKAGING:
- ▶ TENT CANOPY + FRAME + ACCESSORIES: 30X38X160 CM
  - ▶ TENT CANOPY: 67X50 CM
  - ▶ EQUIPMENT: 48X40 CM
  - ▶ WEIGHT OF THE COMPLETE TENT: ABOUT 75 KG





**THE TENT CONSISTS OF THE FOLLOWING COMPONENTS:**

NAME OF ITEM	QUANTITY	DIMENSIONS AND MATERIAL	COMMENTS
<b>TENT CANOPY:</b> - ROOF – 1 PC. - ROOF REMOVABLE LINING – 1 PC. - SIDE WALL WITH THE ENTRANCE – 1 PC. - SIDE WALL WITH TECHNICAL OPENINGS – 1 PC. - SIDE WALL WITH A WINDOW – 1PC. - FULL SIDE WALL – 1PC.	1 SET	IMPREGNATED FABRIC WATERPROOF, ANTIFUNGAL, FLAME-RETARDANT	ROOF PACKAGING SIDE WALLS PACKAGING
<b>TENT FRAME:</b>	1 SET	ANODISED ALUMINIUM PROFILES	MAIN TRANSPORT PACKAGING
<b>GUY ROPES:</b>	6 PC.	ROPE L. 3,5 M	EQUIPMENT BAG
<b>STAKES:</b>	8 PC.	L 300 MM	EQUIPMENT BAG
<b>HAMMER:</b>	1 PC.		EQUIPMENT BAG
TRANSPORT PACKAGING FOR TENT CANOPY + FRAME + EQUIPMENT	1 PC.	PVC FABRIC	
TRANSPORT PACKAGING FOR SIDE WALLS	2 PC.	PVC FABRIC	2X WALLS IN 1PC. OF BAG
TRANSPORT PACKAGING FOR ROOF SHEATING	1 PC.	PVC FABRIC	ROOF + ROOF LINING
TRANSPORT PACKAGING FOR EQUIPMENT	1 PC.	PVC FABRIC	

**OPTIONAL TENT EQUIPMENT:**

NAME OF ITEM	QUANTITY	DIMENSIONS AND MATERIAL	COMMENTS
<b>REMOVABLE LINING OF THE TENT:</b> -REMOVABLE LINING - SIDE WALL WITH THE ENTRANCE - 1 PC. - REMOVABLE LINING – SIDE WALL WITH TWO WINDOWS - 1 PC. - REMOVABLE LINING - SIDE WALL WITH TECHNICAL OPENINGS - 1 PC. - REMOVABLE LINING - FULL SIDE WALL - 1 PC.	1 SET	IMPREGNATED FABRIC WATERPROOF, ANTIFUNGAL, FLAME RETARDANT, RESISTANT TO DIRT	REMOVABLE LINING PACKAGING
TENT FLOOR	1 PC.	PVC FABRIC	FLOOR PACKAGING
STAKES:	2 PC.	L 300 MM	EQUIPMENT BAG
TRANSPORT PACKAGING FOR REMOVABLE LINING OF SIDE WALLS	2 PC.	PVC FABRIC	2X SIDE WALLS LINING IN 1PC. OF BAG
FLOOR TRANSPORT PACKAGING:	1 PC.	PVC FABRIC	
REPAIR MATERIAL - BASIC FABRIC	2 PC.	40X55 CM	EQUIPMENT BAG
REPAIR MATERIAL - FABRIC REMOVABLE LINING	2 PC.	40X55 CM	EQUIPMENT BAG

# > 6x6

RAPID DEPLOYMENT TENT 6X6 WITH ADDITIONAL EQUIPMENT IS A UNIVERSAL TENT, DESIGNED AS A COMMAND POST, HOSPITAL TENT, AS WELL AS A CAMPING, STORAGE, SANITARY, SOCIAL ETC. TENT, FOR ACTIVITIES REQUIRING ISOLATION FROM THE ATMOSPHERIC IMPACT.

LINES ATTACH THE TENT TO THE OUTER FRAME MADE OF ALUMINIUM AND STAINLESS STEEL. THE TENT'S CAP IS MADE OF MATERIALS WITH WATER-PROOF IMPREGNATION OF HIGHEST ENDURANCE PARAMETERS AND OPERATIONAL QUALITIES.

- ▶ LENGTH: 6,00 M
- ▶ WIDTH: 6,00 M
- ▶ CENTRAL HEIGHT: 2,90 M.
- ▶ SIDE HEIGHT: 2,10 M
- ▶ FLOOR SURFACE: 36,00 M<sup>2</sup>
- ▶ TOTAL SURFACE: 47,00 M<sup>2</sup>
- ▶ WEIGHT – CAP: 70,10 KG
- ▶ WEIGHT – FRAME: 74,80 KG









# FALCON

THE NS FALCON IS A UNIVERSAL TENT. DESIGNED TO SERVE AS A COMMAND POST, HOSPITAL, BARRACKS, CAMP OR WAREHOUSE. FURTHERMORE IT IS IDEAL FOR TASKS THAT REQUIRE ISOLATION FROM THE INFLUENCES OF ATMOSPHERIC CONDITIONS. THE TENT CAN BE USED IN ANY TERRAIN AND CLIMATE, INCLUDING HIGH HUMIDITY AND HIGH TEMPERATURE ENVIRONMENTS (-30°C TO +50°C).

DIMENSIONS 6 X 6,65 X 3M

CANOPY SUSPENDED FROM FRAME USING RUBBER MOUNTS (TO MINIMIZE THE IMPACT OF ADVERSE WEATHER CONDITIONS (WIND, SNOW, RAIN, ETC.)

INNER LINING TO PROVIDE THERMAL COMFORT

THE THREE-LAYER DESIGN OF WINDOWS, PROVIDES MAXIMUM COMFORT, REGARDLESS OF PREVAILING WEATHER CONDITIONS

THE TECHNICAL OPENINGS, ALLOWING FOR CABLING, VENTILATION, HEATING AND A/C SYSTEMS

AVAILABLE IN VERSIONS WITH A FIXED OR DETACHABLE FLOOR

AVAILABLE IN STEEL OR ALUMINUM FRAME

MECHANICAL SEAM SEALING, ENSURING WATER RESISTANCE OF THE STRUCTURE









# TENTAR

- ▶ FLOOR SPACE: 220,5 M<sup>2</sup>
- ▶ DIMENSIONS: COMPLEX- 26x16,3 M  
 SEGMENT- 7x9 M  
 CONNECTOR- 7x4,5 M
- ▶ WEIGHT: 265 KG
- ▶ SET UP TIME: 90 MIN
- ▶ NUMBERS OF PERSONS TO SET UP: 6
- ▶ TRANSPORT: 11 CASES
- ▶ FRAME: STEEL OR ALUMINIUM
- ▶ MATERIAL:
  - SHEATING- POLYESTER 340G/M<sup>2</sup>, WATERPROOF, WATETIGHT, FIRE RETARDANT
  - DETACHABLE LINING- POLYESTER 70%, COTTON 30%, 260G/M<sup>2</sup>, ANTIFUNGAL, FIRE RETARDANT
  - FLOOR- PCV COATED POLYESTER PCV 735G/M<sup>2</sup>, FIRE RETARDET

INTENDED FOR NUTRITIONAL PURPOSES IN THE FIELD, THE WHOLE CANTEEN SYSTEM CAN HOLD UP TO 144 SOLDIERS AT THE SAME TIME

EASY INSTALLATION AND OPERATION AS WELL AS HIGH FUNCTIONALITY ALLOWS FOR AN EFFECTIVE USE OF A COMPLEX OF IN THE FIELD

THE SYSTEM IS THREE-ARMED STAR SHAPED

THE UNIVERSALITY OF THE SYSTEM ENABLES TO CONNECT PARTICULAR TENTS

THE AESTHETICS AND PRACTICALITY OF TENTS ARE COMPARABLE WITH SIMILAR PRODUCTS USED BY OTHER FOREIGN ARMIES











# > NP 16, 26, 38

TENT	NP/NPM 16	NP/NPM 26	NP/NPM 38
WIDTH	5,20 M	5,20 M	5,20 M
LENGTH	3,10 M	4,90 M	7,20 M
HEIGHT	2,60 M	2,60 M	2,60 M

STANDARD TENT EQUIPMENT:

- ☒ CASE
- ☒ SET OF PINS AND STAKES, HAMMER
- ☒ REPAIR KIT
- ☒ LEG BELLOWS BRAVO, CAP. 6.5 L

RESCUE TENTS FOR ALL RESCUE AND PROTECTION CONDITIONS.  
STRUCTURE BASED ON PNEUMATIC FRAME.

PNEUMATIC TENTS ARE FIT FOR DEPLOYMENT IN VARIOUS FIELD AND CLIMATE CONDITIONS, INCLUDING HIGH AIR HUMIDITY AND SUN-EXPOSURE (OUTSIDE TEMPERATURE RANGE FROM -30°C TO +55°C).

SEMI-PNEUMATIC TENTS NPM-TYPE HAVE ALUMINUM STRAINING TUBES INSTEAD OF LENGTHWISE FRAMES.







NP 38, 26, 16





# BEDROOM TENT

TENT DIMENSIONS: WIDTH: 3.5 M, LENGTH: 5.0 M, LOWEST HEIGHT: 1.8 M

SHEATHING COLOUR: BEIGE, CAPPUCINO, THE SAND OF SAHARA

TENT CANOPY MADE OF A POLYESTER FABRIC, WITH BASIC WEIGHT OF UP TO 300 G/M<sup>2</sup>

ON THE 5-METRE-LONG SIDE OF THE TENT, THERE IS ONE THREE-LAYER WINDOW (THE WINDOWS ARE SITUATED ASYMMETRICALLY WITH RESPECT TO EACH OTHER, THAT IS DIAGONALLY)

PERMANENT MOSQUITO NET

ROLL-UP TRANSPARENT FILM

ROLL-UP TENT FABRIC

WINDOW DIMENSIONS: 0.5X0.6 M - ON THE SHORTER, 3.5-METRE-LONG SIDE OF THE TENT, THERE IS A TWO-LAYER DOOR (1 PC)

ROLL-UP MOSQUITO NET







DOOR DIMENSIONS: HEIGHT: 1.8 M, WIDTH: 1.2 M - ON THE SHORTER, 3.5-METRE-LONG SIDE OF THE TENT AND ON THE OPPOSITE SIDE OF THE DOOR, THERE IS A VENTING OPENING PROTECTED WITH A MESH SCREEN

THE FLOOR OF THE TENT, PERMANENTLY ATTACHED TO THE TENT AND MERGED WITH THE WALLS UP TO THE HEIGHT OF 10 CM

TENT FRAMEWORK MADE OF GALVANISED STEEL PIPES OF 25 MM OUTER DIAMETER

THE WEIGHT OF THE TENT: 72-82 KG

THE FOLDED TENT WILL BE PACKED INTO TWO TRANSPORT BAGS

THE BAG WITH TENT FRAMEWORK:  
LENGTH: 2.0 M, HEIGHT: 0.4 M, WIDTH: 0.4 M

THE BAG WITH THE TENT: LENGTH: 1.75 M, HEIGHT: 0.5 M, WIDTH: 0.6 M

THE TENT IS EQUIPPED WITH PEGS, PINS AND GUY ROPES



THE LARGEST TENT OF THIS TYPE OFFERED ON THE MARKET

FLOOR SPACE OF 534 M2 ALLOWS TO CONDUCT REPAIR AND MAINTENANCE WORKS ON MILITARY ARMAMENTS AND HARDWARE, INCLUDING ARMoured, MECHANIZED, AUTOMOTIVE AND AIR FORCE EQUIPMENT

PNEUMATIC CONSTRUCTION ENABLES TO SET UP THE TENT IN DIFFERENT FIELD CONDITIONS

THE SHORT SET UP TIME MAKES THE TENT IDEAL FOR A FIELD TECHNICAL HANGAR

DUE TO THE AUTOMATIC SYSTEM MAINTAINING PRESSURE IN CHAMBERS IT CAN BE USED IN ONE PLACE FOR A LONG PERIOD OF TIME

- ▶ FLOOR SPACE 534M<sup>2</sup>
- ▶ DIMENSIONS: LENGTH 35 M, WIDTH 19,8 M, HEIGHT 10 M
- ▶ WEIGHT: 2820 KG
- ▶ SET UP TIME: TOTAL 6H FRAME FILING 70 MIN
- ▶ NUMBER OF PERSONS TO SET UP: 8
- ▶ TRANSPORT: 4 COVERS OF 160X12X80 CM
- ▶ FRAME: PNEUMATIC
- ▶ MATERIAL: PCV COATED POLYESTER, WATERPROOF AND FIRE RETARDANT









- ▶ FLOOR SPACE: 148 M<sup>2</sup>
- ▶ DIMENSIONS: LENGTH 20,1 M, WIDTH 9,8 M, HEIGHT 5,7 M
- ▶ WEIGHT: 600 KG
- ▶ SET UP TIME: 60 MIN
- ▶ NUMBER OF PERSONS TO SET UP: 8
- ▶ TRANSPORT: 20" CONTAINER
- ▶ FRAME: PNEUMATIC
- ▶ MATERIAL: PCV COATED POLYESTER, WATERPROOF AND FIRE RETARDANT

DESIGNED FOR SERVICE-REPAIR WORKS IN FIELD CONDITIONS

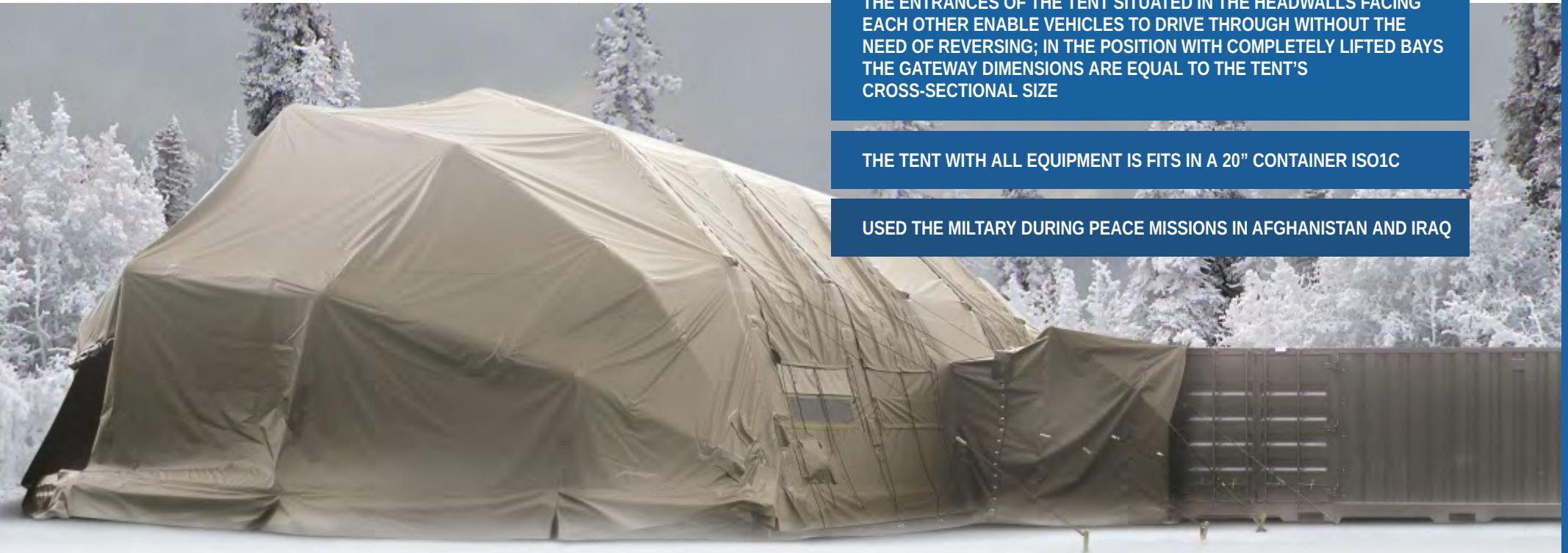
THANKS TO COATED PCV AND AN AUTOMATIC SYSTEM OF MAINTAINING PRESSURE IN CHAMBERS THE TENT GUARANTEES COMPLETE PROTECTION AGAINST ADVERSE WEATHER CONDITIONS IN TEMPERATURE RANGES FROM -30°C TO +50°C

THE TENT CONSTRUCTION BASED ON PNEUMATIC FRAMES ALLOWS IT TO BE SET UP IN ALL FIELD CONDITIONS

THE ENTRANCES OF THE TENT SITUATED IN THE HEADWALLS FACING EACH OTHER ENABLE VEHICLES TO DRIVE THROUGH WITHOUT THE NEED OF REVERSING; IN THE POSITION WITH COMPLETELY LIFTED BAYS THE GATEWAY DIMENSIONS ARE EQUAL TO THE TENT'S CROSS-SECTIONAL SIZE

THE TENT WITH ALL EQUIPMENT IS FITS IN A 20" CONTAINER ISO1C

USED THE MILITARY DURING PEACE MISSIONS IN AFGHANISTAN AND IRAQ





# ▶ PSP DK 38

## decontamination tent

TENT DESIGNED FOR INITIAL DECONTAMINATION; MAY ALSO SERVE AS RESCUE, CAMPING, STORAGE, SANITARY, SOCIAL ITEM, OR AS A CHANGING ROOM. THE TENT CONSISTS OF PVC FABRIC (CAP, FLOOR, AND CURTAIN) AND A ONE-PIECE FRAME MADE OF ALUMINIUM. THE TENT IS FIT FOR MODULAR CONNECTION.

### SET UP TENT DIMENSIONS:

- ▶ LENGTH 6,00 M
- ▶ WIDTH 5,20 M
- ▶ HEIGHT 2,70 M
- ▶ FLOOR SURFACE 31 M

### DIMENSIONS AFTER PACKING:

- ▶ CAP; CURTAIN; FLOOR 1,60 X 0,65 X 0,50 M
- ▶ FRAME 2,40 X 0,68 X 0,55 M
- ▶ EQUIPMENT 0,65 X 0,33 M
- ▶ MASS [CAP; CURTAIN; FLOOR] 90 KG
- ▶ FRAME MASS 57 KG
- ▶ EQUIPMENT MASS 7 KG



# ➤ DECONTAMINATION CABIN 1 SEGMENT

THE CABIN IS DESIGNED FOR CLEANING AND DISINFECTING PROTECTIVE CLOTHING CONTAMINATED WITH CHEMICAL SUBSTANCES

PNEUMATIC FRAME MADE OF RUBBER-COATED POLYAMIDE FABRIC

REMOVABLE BOTTOM, ATTACHED TO THE LOWER TUBE OF THE FRAME

REMOVABLE FOIL CURTAIN ATTACHED TO THE UPPER TUBE OF THE FRAME

THE STANDARD VERSION OF THE CABIN IS EQUIPPED WITH A SPRAYING LINE CONSISTING OF 8 SPRAY HEADS AND A PRESSURE HOSE; THE LINE CAN BE FED BY A HIGH-PRESSURE CLEANER, I.E. KÄRCHER. THE MAXIMUM ALLOWED VOLUME OF LIQUID SUPPLIED TO THE DEVICE: 12 LITRES

MINIMUM SET OF ACCESSORIES: BAG, REPAIR KIT, A SET OF PINS AND PEGS



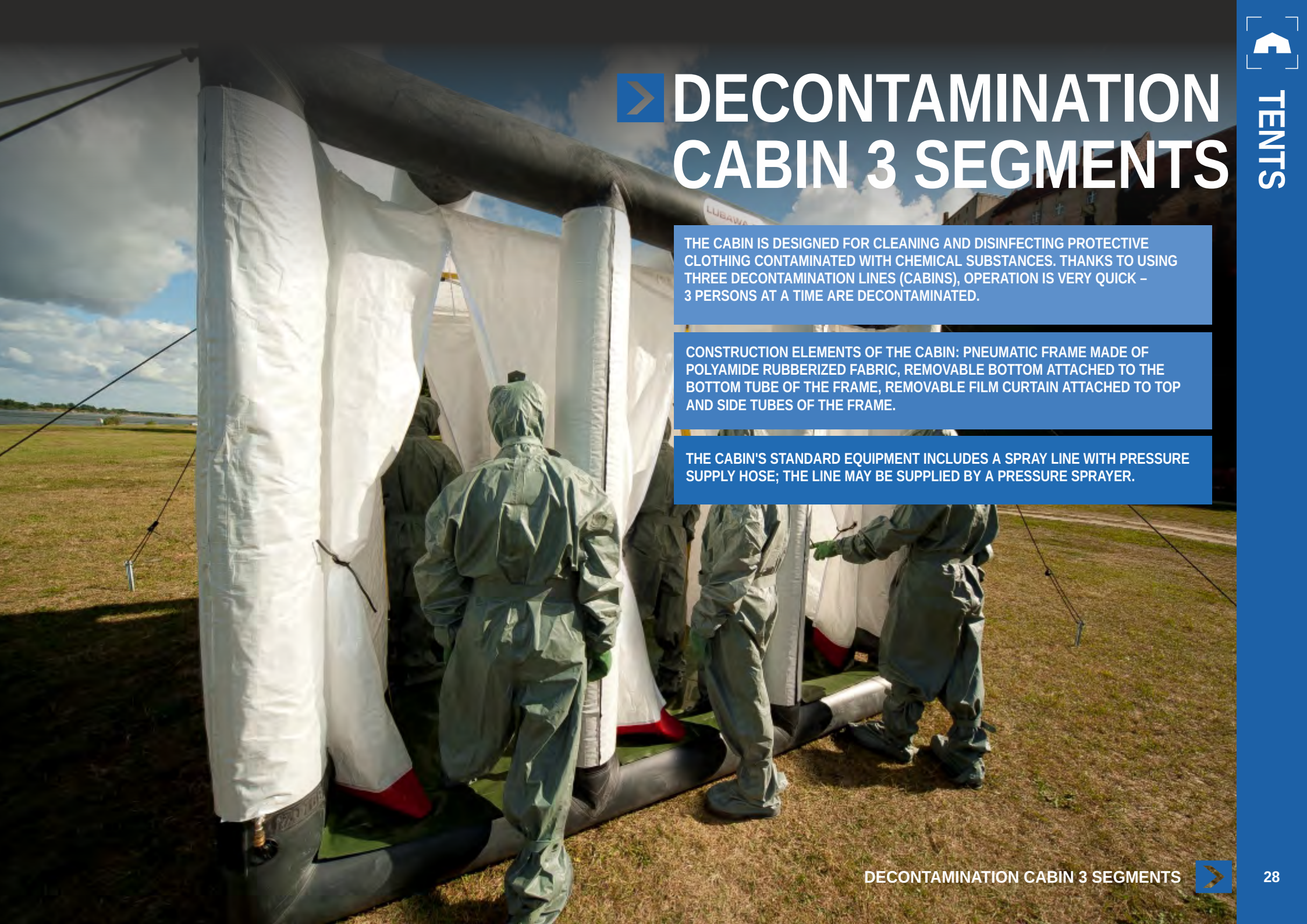


# > DECONTAMINATION CABIN 3 SEGMENTS

THE CABIN IS DESIGNED FOR CLEANING AND DISINFECTING PROTECTIVE CLOTHING CONTAMINATED WITH CHEMICAL SUBSTANCES. THANKS TO USING THREE DECONTAMINATION LINES (CABINS), OPERATION IS VERY QUICK - 3 PERSONS AT A TIME ARE DECONTAMINATED.

CONSTRUCTION ELEMENTS OF THE CABIN: PNEUMATIC FRAME MADE OF POLYAMIDE RUBBERIZED FABRIC, REMOVABLE BOTTOM ATTACHED TO THE BOTTOM TUBE OF THE FRAME, REMOVABLE FILM CURTAIN ATTACHED TO TOP AND SIDE TUBES OF THE FRAME.

THE CABIN'S STANDARD EQUIPMENT INCLUDES A SPRAY LINE WITH PRESSURE SUPPLY HOSE; THE LINE MAY BE SUPPLIED BY A PRESSURE SPRAYER.







LENGTH 3,25 / 2,79 ± 0,02 M

WIDTH 2,00 / 1,54 ± 0,02 M

HEIGHT 2,30 / 2,07 ± 0,02 M

INNER SURFACE OF THE CABIN: 4,3 M<sup>2</sup>

WEIGHT OF THE CABINS IN THE BAG WITHOUT ACCESSORIES 55 KG







# ▶ AIR PUB

THE PURPOSE OF AIR PUB IS TO PROVIDE SECURITY AT ALL TYPES OF OUTDOOR EVENTS. IT IS THE PERFECT SOLUTION FOR CATERING COMPANIES WHOSE BUSINESS INCLUDES HANDLING AND ORGANISING OF TEAM-BUILDING EVENTS, PICNICS, BANQUETS, WEDDINGS OR DANCING EVENTS. THE TENT CAN BE USED AS A CATERING BOOTH, COMMERCIAL BOOTH OR EVEN A SHELTER FOR SEASONAL ARCADE PARLOURS. IT CAN BE DEPLOYED IN LESS THAN 15 MINUTES (2 PERSONS). DETACHABLE FLOOR AVAILABLE AS AN OPTION.

- ▶ OUTER SURFACE: 61 M<sup>2</sup>
- ▶ INNER SURFACE: 47 M<sup>2</sup>
- ▶ HEIGHT: 350 CM
- ▶ INNER HEIGHT: 305 CM
- ▶ WIDTH: 660 CM
- ▶ WIDTH WITH DRIP COVERS: 720 CM
- ▶ LENGTH: 800 CM
- ▶ LENGTH WITH DRIP COVERS: 850 CM
- ▶ WORKING PRESSURE INSIDE THE AIR TUBES: 0,20 BAR
- ▶ TENT WEIGHT: 125 KG





# WATER TANKS

Our water containers have been designed for storage of drinking water, especially needed during and after natural disasters. Different container sizes and appropriate materials, suitable for contact with drinking water, ensure product efficiency irrespectively of environmental conditions.

---

▶ 100-4000L CLOSED

---

▶ 1000-4000L

---

▶ 20L CLOSED TANK: A BUCKET

---

▶ 300L CLOSED

---





# ➤ 100-4000L CLOSED

CLOSED FLEXIBLE TANK FOR STORAGE OF DRINKING WATER, WITH 100 L CAPACITY

THE TANK IS MADE OF A POLYAMIDE RUBBERISED FABRIC. IN THE TANK, THE INFLOW-OUTFLOW VALVES ARE MOUNTED, AS WELL AS THE FILL AND DRAIN VALVES.

**INTENDED USE:**  
THE TANK IS DESIGNED AS A PURE UTILITY WATER TANK AND CAN ALSO ACT AS ACT AS A STORAGE TANK FOR TEMPORARY WATER STORAGE.

- BASIC TECHNICAL SPECIFICATIONS:**
- TANK WEIGHT:  
TANK WEIGHT TOGETHER WITH FITTINGS  $3.80 \pm 0.50$  KG  
WEIGHT OF THE TANK IN A BAG  $4.40 \pm 0.50$  KG
  - DIMENSIONS OF EMPTY TANK:  
TANK LENGTH  $1120 \pm 30$  MM  
TANK WIDTH  $910 \pm 30$  MM

- COMPONENTS OF THE SET:**
- CLOSED FLEXIBLE WATER TANK
  - BAG
  - REPAIR KIT
  - INSTRUCTIONS FOR USE
  - WARRANTY CARD





# > 1000-4000L

THE TANKS ARE DESIGNED FOR STORING FIREFIGHTING WATER, DRINKABLE WATER AND AGRESSIVE PETROLEUM DERIVATIVE LIQUIDS. THE TANKS ARE FITTED WITH AN INLET-OUTLET VALVE, ENABLING CONNECTING THE CONTAINER TO FIRE BRIGADE'S FIREFIGHTING EQUIPMENT. DEPENDING ON INDIVIDUAL NEEDS, WE PROVIDE TANKS WITH CAPACITY FROM 10 TO 20,000 L.

**SET INCLUDES:**

- ▶ REPAIR KIT
- ▶ COVER
- ▶ USER'S MANUAL









## ➤ 20L CLOSED TANK: A BUCKET

THE TANK IS MADE OF POLYAMIDE FABRIC RUBBER-COATED ON BOTH SIDES.

### INTENDED USE:

THE TANK IS DESIGNED FOR STORAGE OF DRINKING WATER IN FIELD CONDITIONS.

### BASIC TECHNICAL SPECIFICATIONS:

- ❑ WEIGHT OF THE TANK MAX 0.6 KG
- ❑ DIMENSIONS OF EMPTY TANK:
- ❑ DIAMETER OF THE BOTTOM 350±10 MM
- ❑ DIAMETER OF THE LID 180±10 MM
- ❑ HEIGHT /WITHOUT THE HANDLES/ 390±10 MM
- ❑ HEIGHT /WITH THE HANDLES/ 590±10 MM

### COMPONENTS OF THE SET:

- ❑ WAX OR SILICONE GREASE FOR WATERPROOF
- ❑ ZIPPER MAINTENANCE
- ❑ INSTRUCTIONS FOR USE







# > 300L CLOSED

CLOSED FLEXIBLE TANK FOR STORAGE OF DRINKING WATER, WITH 300 L CAPACITY

THE TANK IS MADE OF A POLYAMIDE RUBBERISED FABRIC. IN THE TANK, THE INFLOW-OUTFLOW VALVES ARE MOUNTED, AS WELL AS THE FILL AND DRAIN VALVES.

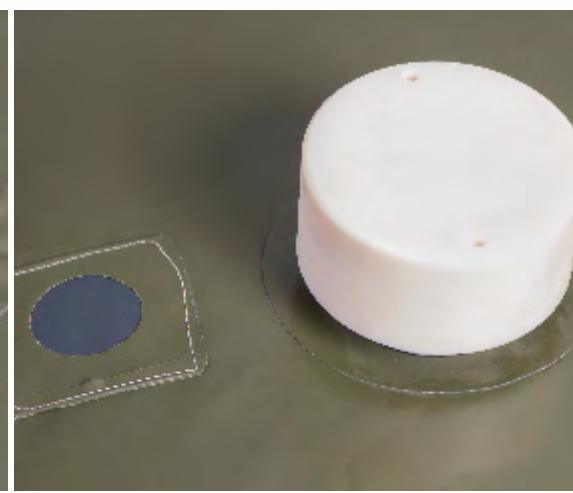
**INTENDED USE:**  
THE TANK IS DESIGNED AS A PURE WATER TANK AND CAN ALSO ACT AS A STORAGE TANK USED FOR TEMPORARY STORAGE OF WATER.

**BASIC TECHNICAL SPECIFICATIONS:**

- ▶ TANK WEIGHT:  
TANK WEIGHT TOGETHER WITH FITTINGS  $6.60 \pm 0.50$  KG  
WEIGHT OF THE TANK IN A BAG  $7.30 \pm 0.50$  KG
  
- ▶ DIMENSIONS OF EMPTY TANK:  
TANK LENGTH  $2,600 \pm 50$  MM  
TANK WIDTH  $1,300 \pm 50$  MM

**COMPONENTS OF THE SET:**

- ▶ CLOSED FLEXIBLE WATER TANK
- ▶ BAG
- ▶ REPAIR KIT INCLUDED IN THE SET CONSISTS OF:
  - A SMALL BAG FOR THE REPAIR KIT – 1 PC.
  - A RUBBERISED FABRIC PATCH OF DIMENSIONS: 21X30 CM – 1 PC.
  - A TUBE OF GLUE /50 G/ – 1 PC.
  - A FLAT BRUSH – 1 PC.
  - SANDPAPER NO. 60 OF DIMENSIONS: 10X10 CM – 2 PC.
  
- ▶ INSTRUCTIONS FOR USE
- ▶ WARRANTY CARD





# FLOOD BARRIERS

Flood barriers offered by Lubawa S.A. have been designed for building or raising flood banks. They are effective during the flood due to their mobility, quick assembly and the possibility of filling them with flood water.

---

▶ 10 M WITH INTERNAL SLEEVE 23 M

---

▶ 10 M STANDARD VERSION

---

▶ 10 M WITH ZIPPER

---

▶ 2,5 M AND 5 M

---

▶ 10 M AND 20 M FLOOD MITIGATION DAM

---





# ➤ FLOOD BARRIER 10 M WITH INTERNAL SLEEVE 23 M (POLYESTER)

BARRIER IS DESIGNED FOR BUILDING FLOODBANKS OR FOR THEIR ELEVATION. CONSISTS OF TWO SLEEVES. INTERNAL SLEEVE IS TO BE FILLED WITH WATER. EXTERNAL SLEEVE SERVES AS ITS SHEATHING. THE SYSTEM'S ADVANTAGES ARE SMALL WEIGHT, IT'S EASY TO MOVE, STORE AND INSTALL. BARRIERS ARE PACKED BY THREE PIECES A SET, TOGETHER WITH CLOSING STRAPS.

- HEIGHT ABOUT 40-50 CM (DEPENDING ON THE TERRAIN)
- WIDTH ABOUT 100 CM
- LENGTH 10 M (ONE SEGMENT CAN CONTAIN ABOUT 3000 DM OF WATER)
- WEIGHT OF ONE BARRIER ABOUT 10 KG
- DIMENSIONS OF PACKED BARRIER: 1,1M X 40CM X 5 CM

ONE 10M SEGMENT SUBSTITUTES ABOUT 170 SANDBAGS. BARRIERS CAN BE CONNECTED WITH ONE ANOTHER. IN CASE OF A HIGHER LEVEL OF FLOOD WATER, GREATER HEIGHT MAY BE OBTAINED BY PLACING A THIRD BARRIER ON TWO PREVIOUSLY FILLED ONES – IN THE FORM OF PYRAMID. FLOOD BARRIERS SYSTEM WAS PATENTED IN THE PATENT OFFICE (NO. 195058).







## 10 M STANDARD VERSION

THE BARRIER IS ESSENTIALLY A TIGHT WATER CONTAINER. IT CAN BE FILLED WITH WATER FROM A HYDRANT, FIRE TRUCK OR WITH FLOOD WATER, WITH THE USE OF DIFFERENT TYPES OF PUMPS. THE DIAMETER OF THE BARRIER IS 44 CM AND ITS LENGTH IS 10 M. THE SYSTEM OF BELTS ALLOWS TO JOIN THE BARRIERS IN DIFFERENT CONFIGURATIONS. OPTIONAL EQUIPMENT INCLUDES A WATERPROOF ZIPPER FOR MAINTENANCE OF THE BARRIER. WEIGHT OF THE BARRIER 18 KG.







## > 10 M WITH ZIPPER

FLOOD BARRIER IS MADE IN THE FORM OF A CLOSED WATER TANK. CAN BE FILLED WITH HYDRANT WATER, FIRE-ENGINE, OR FLOOD WATER WITH THE USE OF PUMPS. THE BARRIER IS 44 CM IN DIAMETER AND 10 M IN LENGTH. SYSTEM OF STRAPS ENABLES TO CONNECT BARRIERS IN VARIOUS CONFIGURATIONS. EQUIPPED WITH WATERPROOF ZIPPER USED FOR MAINTENANCE. BARRIER'S WEIGHT 20 KG.







# FLOOD BARRIER 2,5 M AND 5 M

MADE OF REINFORCED, TWO-SIDE RUBBERIZED POLYESTER FABRIC. THUS, THE BARRIER IS ESPECIALLY RESISTANT TO LONG-TERM INFLUENCE OF WATER, AIR AND UV RADIATION. THANKS TO USE OF PROPER MATERIALS, THE BARRIER IS A MULTIPLE USE ITEM. EQUIPPED WITH C-52 CONNECTIONS FOR DIRECT FILLING THROUGH FIREFIGHTING HOSE.

FLOOD BARRIER IS DESIGNED FOR BUILDING FLOODBANKS OR FOR THEIR ELEVATION. ITS STRUCTURE ENABLES CONNECTING INDIVIDUAL MODULES AT A REQUIRED LENGTH WITH A SYSTEM OF BUCKLES ON BOTH SIDES OF THE BARRIER, AND THEIR SEALING WITH A CUT-OFF WALL.

IDEALLY SUBSTITUTES SANDBAGS

REALLY QUICK DEPLOYMENT (10 MINS)

OPTION TO CONNECT ANY LENGTH OF SLEEVES (SEGMENTS OF 2,5 OR 5,0 M)

ADJUSTED TO PUT UP IN PLACES UNAVAILABLE FOR VEHICLES

LOW STORAGE COSTS DUE TO LOW WEIGHT AND SMALL DIMENSIONS OF AN EMPTY BARRIER

WEIGHT BEFORE FILLING:  
FLOOD BARRIER 2,5 M: 25 KG, FLOOD BARRIER 5 M: 48KG

BARRIER HEIGHT AFTER FILLING: 90 CM







# ➤ 10 M AND 20 M FLOOD MITIGATION DAM

THEY HAVE THE FORM OF A CLOSED WATER BASIN. THEY ARE MADE OF REINFORCED, BILATERALLY RUBBERIZED POLYESTER FABRIC. OWING TO THIS, THEY ARE PARTICULARLY RESISTANT TO A LONG-TERM INTERFERENCE OF WATER, AIR, AND UV RADIATION. THE MATERIALS APPLIED MAKE THAT THE DAM IS A MULTI-USE PRODUCT. IT IS DESIGNED TO BUILD FLOOD-MITIGATION WALLS OR TO RAISE THEM. THE SYSTEM OF STRIPS AND CONNECTORS ALLOWS TO CONNECT SLEEVES INTO VARIOUS CONFIGURATIONS AND LENGTHS. FORCING HOSES ARE USED TO FILL THE DAM, PROVIDED WITH A C 75 ROOT. THE DAM CAN BE FILLED WITH WATER FROM A HYDRANT, A FIRE TRUCK, OR FLOOD WATER CAN BE USED WITH VARIOUS TYPES OF PUMPS. THE DAM IS ALSO PROVIDED WITH HOLES ALLOWING THE MAINTENANCE AND DECONTAMINATION AFTER USE.



THEY PERFECTLY REPLACE BAGS WITH SAND

CAPACITY TO CONNECT ANY NUMBER OF SLEEVES IN VARIOUS CONFIGURATIONS (10 M AND 20 M SECTIONS)

WIDTH AT THE BASE 2 M

SWELLING HEIGHT 1 M

WEIGHT BEFORE FILLING 67 KG (10 M DAM), 120 KG (20 M DAM)

DAM CAPACITY CA. 16 M<sup>3</sup> (10 M DAM) OR CA. 32 M<sup>3</sup> (20 M DAM)









# SPECIAL AND CHEMICAL PROTECTIVE CLOTHING

Protective clothing has been designed to protect your skin against the impact of chemical and biological warfare agents. This type of clothing is used for work in aggressive chemical environment as well as areas exposed to environmental disasters connected with production, storage and transport of toxic gases and liquids.

---

## ▣ HIGH VISIBILITY JACKETS

---

### ▣ LIFE JACKET 80N

---

### ▣ KR-7 RESCUE VEST

---

### ▣ CHEMICAL RESISTANT GARMENT

---

### ▣ GAS-TIGHT TRAINING PROTECTIVE SUIT

---

### ▣ THE GOO-BM SUIT

---

### ▣ OLYMPIA BOMB DISPOSAL SUIT

---

### ▣ TITANIA LIGHTWEIGHT BOMB SUIT

---



# ➤ HIGH VISIBILITY JACKETS

WARNING CLOTHING OF INTENSIVE VISIBILITY FOR PROFESSIONAL USE. THE VESTS ARE MADE OF POLYESTER CERTIFIED FABRIC IN YELLOW AND ORANGE, AND MADE OF FLUORESCENT OPENWORK FABRIC. THE VESTS WERE CERTIFIED BY THE CENTRAL INSTITUTE OF WORK PROTECTION IN ŁÓDŹ. THE VEST IS DESIGNED FOR WORKSTATIONS WHICH REQUIRE INCREASED VISIBILITY, SO THAT THE CLOTHING SIGNALS THE WORKER'S PRESENCE AT THE WORKSTATION IN A WAY MAKING IT EASY TO NOTICE AGAINST THE SURROUNDING, IN ALL LIGHTING CONDITIONS DURING DAY, AND IN THE HEADLIGHTS OF VEHICLES AND MACHINES AND OTHER SOURCES OF ARTIFICIAL LIGHTING IN THE DARK. THE VEST CAN BE USED FOR WORKS IN: ROADS, UTILITIES, RAILWAYS, CONSTRUCTION, RE-LOADING AND OTHERS.

TYPES OF EMBLEMS:  
THE THREE METHODS OF CARRYING THE BACKPACK ALLOW THE EMERGENCY RESPONDER TO WORK IN EVERY ENVIRONMENT, IN WHICH THE RESCUE OPERATION TAKES PLACE, AS WELL AS TO WALK A LONG DISTANCE WITH THE LOADED BAG.

CUSTOMS SERVICES, SECURITY, ROAD GUARD, ROAD TRANSPORT INSPECTION, BORDER PATROL, MUNICIPAL POLICE, POLICE, MILITARY POLICE, RAILROAD GUARD

POSSIBILITY TO PRINT OVER ANY LOGO

USE IN THE VEST OF ANY FLUORESCENT EMBLEM

MADE ACC. TO NORM PN EN 471







**MATERIAL:**

- ▶ POLYESTER 100% (GRAMMAGE 140 G/M)
- ▶ STRENGTH OF THE OPENWORK FABRIC TO 50 WASHING CYCLES, CERTIFIED
- ▶ STRENGTH OF TAPES AND FLUORESCENT EMBLEMS TO 60 WASHING CYCLES

**COLOUR:**

- ▶ YELLOW FLUORESCENT
- ▶ ORANGE FLUORESCENT
- ▶ OPENWORK YELLOW FLUORESCENT

**TYPE OF TAPE:**

- ▶ SILVER POLYESTER
- ▶ YELLOW PRISM
- ▶ SILVER PRISM

**BINDING:**

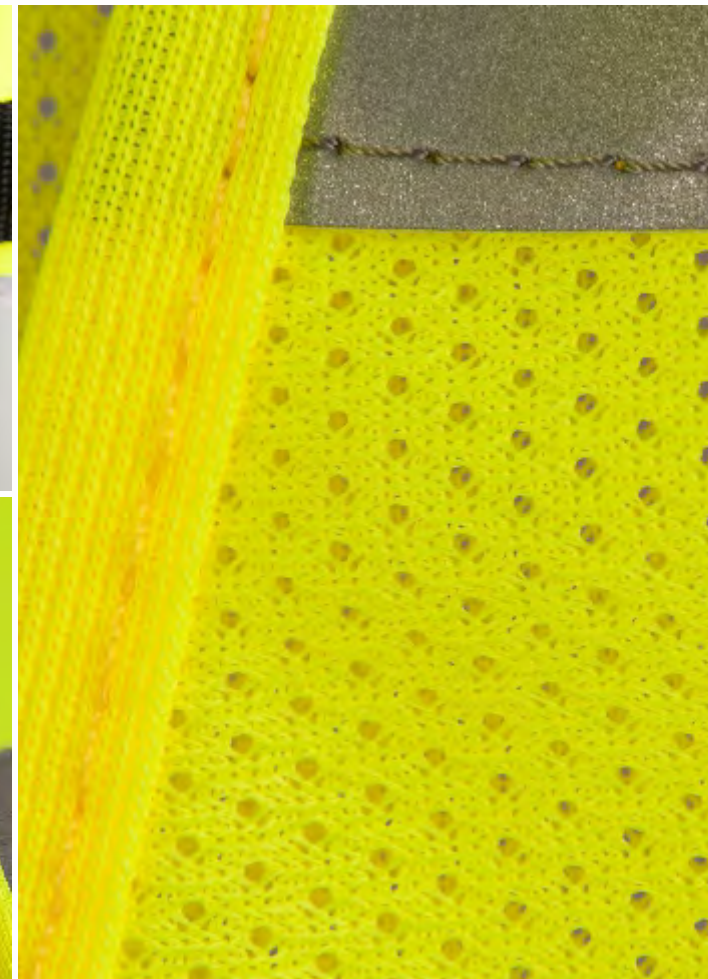
- ▶ SILVER
- ▶ YELLOW
- ▶ ORANGE
- ▶ MEET THE EN 471 NORM
- ▶ ANY COLOUR (AS PER ORDER)

**FASTENING:**

- ▶ VELCRO-TYPE
- ▶ CLIP
- ▶ ZIPPER

**SIZE:**

- ▶ FROM S TO XXL







# LIFE JACKET 80N

LIFE JACKET 80N WITH A HARNESS IS DESIGNED FOR PROFESSIONALS INVOLVED IN THE RESCUE OPERATIONS. IT IS DEDICATED TO USERS ABLE TO SWIM; FOR USE IN INLAND NAVIGATION; IT IS NOT A RESCUE MEASURE.

## STRUCTURE:

- ▶ MADE OF POLYESTER FABRIC WITH A SURFACE MASS OF 292 G/M<sup>2</sup> RESISTANT TO ABRASION AND DISCOLORATION
- ▶ FASTENED WITH A WIDE ZIPPER
- ▶ 3 FRONT POCKETS WITH VELCRO FASTENING
- ▶ INTERIOR OF THE POCKET PROVIDED WITH ADDITIONAL HATCHES, ALLOWING PROTECTION AGAINST THE LOSS OF OBJECTS FROM INSIDE THE POCKET DURING MOVEMENT
- ▶ POCKET FOR RADIO
- ▶ SIDE POCKET FOR HEAVING LINE
- ▶ 2 STRIPES OF FLAME RETARDANT POLYAMIDE TAPE LOCKABLE WITH BUCKLES OF THE NEXUS BRAND
- ▶ DUAL STEPPER BELT
- ▶ THE 3M SOLAS 6755 REFLECTIVE TAPE
- ▶ ADDITIONAL REFLECTIVE ELEMENT OF ANY LOGO ON THE CHEST AND BACK - VELCRO FASTENINGS SUBTILES

FACILITATES CONDUCTING RESCUE OPERATIONS, ENSURING THE SAFETY OF THE USER AT A LOW PRICE. THE VEST IS EQUIPPED WITH LIFEJACKET LED FLASHING "SAFELITE II" LIGHT INDICATOR - LIGHT JACKET, SO-CALLED. "POSITION MARKER." COMPLIES WITH SOLAS. ACTIVATED AUTOMATICALLY (WHEN IN CONTACT WITH WATER) OR MANUALLY. SIMPLE AND QUICK TO INSTALL.

OPTIONAL: BLADE AND RESCUE HEAVING LINE.

THE VEST IS CERTIFIED BY PN-EN ISO 12402-5:2007/A1:2012



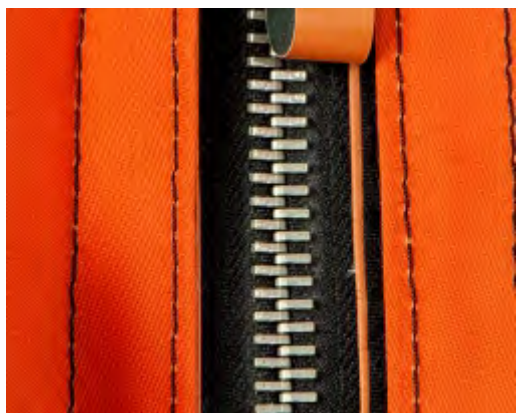






## ➤ KR-7 RESCUE VEST

PNEUMATIC LIFEJACKET WITH AUTOMATIC FILLING SYSTEM DEPLOYING WHEN IMMERSED IN WATER TO A DEPTH OF 10CM. ANOTHER ADVANTAGE IS THE POSSIBILITY OF INFLATION BY MOUTH. TEMPERATURE RANGE -30°C +50°C. VEST IS ABLE TO MAINTAIN USER ON SURFACE OF WATER BY MIN. 6 HOURS.







# CHEMICAL RESISTANT GARMENT

CLOTHING IS INTENDED TO PROTECT THE SKIN AGAINST CHEMICAL AND BIOLOGICAL WARFARE AGENTS, AND CAN BE USED FOR WORK IN CHEMICALLY AGGRESSIVE ENVIRONMENTS, AND FOR WORK DURING ECOLOGICAL DISASTERS CONNECTED WITH PRODUCTION, STORAGE AND TRANSPORT OF POISONOUS GASES AND LIQUIDS.

SIZE	I	II	III
PER HEIGHT	170 - 176 CM	176 - 182 CM	182 - 188 CM
TORSO SIZE	108 - 112 CM	112 - 116 CM	116 - 120 CM



AVAILABLE IN TWO VARIANTS:  
L-1 TWO-PIECE CLOTHING  
L-2 ONE-PIECE SUIT





## ➤ GAS-TIGHT TRAINING PROTECTIVE SUIT

GAS-TIGHT TRAINING PROTECTIVE SUIT THIS SUIT IS DESIGNED TO BE USED FOR TRAINING EVENTUAL USERS OF GAS-TIGHT SUITS. IT CLOSELY RESEMBLES THE GOO-MS GAS-TIGHT SUITS. THE SUIT IS LIGHTWEIGHT, PERFECTLY SUITABLE FOR TRAINING, AND CHARACTERISED BY HIGH RESISTANCE TO MECHANICAL DAMAGE.

THE SUIT IS FOR TRAINING PURPOSES ONLY – IT DOES NOT PROTECT AGAINST TOXIC GASES OR CHEMICALS.

SIZE	I	II	III
LENGTH	120 CM	122 CM	132 CM
WIDTH	77-93 CM	87-103 CM	87-113 CM

- ELEMENTS OF THE SUITS:**
- POLYAMIDE FABRIC
  - RUBBER: COATED ON BOTH SIDES
  - CONNECTIONS: SEWN, EDGINGS
  - ZIPPER
  - VENTILATION VALVES
  - LATEX GLOVES
  - WORKING RUBBER BOOTS
  - PANORAMIC PANE GLUED INTO THE HOOD
  - PROTECTIVE RUCKSACK FOR THE CYLINDERS, REINFORCED FROM THE INSIDE







## THE GOO-BM SUIT

THE GOO-BM SUIT IS USED TO PROTECT AGAINST THE EFFECTS OF HARMFUL CHEMICALS IN THE FORM OF GASES, VAPORS, LIQUIDS, AEROSOLS AND RADIOACTIVE DUSTS, BIOLOGICAL AGENTS AND TOXIC WARFARE AGENTS. FOR WORKING IN AN ATMOSPHERE WITH AN ELEVATED CONCENTRATION OF TOXIC OR IN AN OXYGEN-DEPLETED ENVIRONMENT.

THE GOO-BM SUIT CAN BE OPERATED IN TEMPERATURE RANGES FROM -300°C TO +600°C.

THE GOO-BM SUIT SHOULD BE USED ONLY IN CONJUNCTION WITH PRESSURIZED BREATHING APPARATUS INTRODUCED FROM THE OUTSIDE OF THE SUIT. THE GOO-BM SUIT MAY BE USED ONLY BY A TRAINED RESCUER ACCORDING TO THE APPLICABLE INSTRUCTIONS.

SIZE	I	II	III	IV
PER HEIGHT	175 - 180 CM	181 - 186 CM	186 - 191 CM	195 - 200 CM
TORSO SIZE	120 - 124 CM	124 - 128 CM	128 - 132 CM	132 - 136 CM
SHOE SIZE	7/41/27 CM	9/43/28,5 CM	10/45/29,5 CM	11/46/30,5 CM





# ➤ TITANIA LIGHTWEIGHT BOMB SUIT

THE TITANIA LIGHTWEIGHT BOMB SUIT IS A FULL SPECIFICATION BOMB SUIT WITH DESIGN FOCUS ON COMFORT, FLEXIBILITY AND LIGHT WEIGHT. UNIQUELY THE SALLOPETTE STYLE TROUSERS ARE WORN OVER THE JACKET PROVIDING A GARMENT WITH NO FRONT OPENINGS AND AN UNINTERRUPTED FUNNEL EFFECT TO DISSIPATE THE EFFECTS OF BLAST. TITANIA CAN BE EASILY DONNED AND DOFFED BY THE WEARER WITHOUT THE NEED OF ASSISTANCE AND IS ESPECIALLY SUITED TO HOT AND HUMID CONDITIONS. THE TWO PART BLAST PLATES HAVE THE HIGHEST LEVEL OF PROTECTION OF ANY MAINSTREAM BOMB SUIT MANUFACTURER WITH A V50 OF 1944 M/SEC, 6395 FPS (STANAG 2920 17GR FSP AND ALSO MIL STD 662F) UNITED SHIELD OFFERS A FULL RANGE OF EOD ACCESSORIES INCLUDING HARD WIRE AND WIRELESS COMMUNICATIONS, COMPLETE COOLING SUITS, OPEN AND CLOSED FACE HELMETS, UTILITY BAGS ETC. ALL ARMOUR SOLUTIONS ARE INDEPENDENTLY TESTED AND FULL TEST DATA IS AVAILABLE FOR PERUSAL.

**COMPONENTS**  
HELMET, BLAST PLATES, JACKET AND TROUSERS WITH INTEGRAL GROIN PROTECTOR.

**ARMOUR SOLUTIONS**  
THE STANDARD SOFT ARMOUR SOLUTION INCORPORATED INTO THE SUIT IS CONSTRUCTED OF 100% PARA ARMID FABRIC AND PROVIDES FRAGMENTATION PROTECTION IN EXCESS OF V50 450 M/SEC. OTHER LEVELS OF PROTECTION CAN BE PROVIDED TO MEET CLIENT REQUIREMENTS.

**SIZE AND WEIGHTS**  
A FULL SIZE RANGE IS AVAILABLE FROM SMALL TO X LARGE. THE SUIT WEIGHT COMPLETE WITH HELMET IS <25 KGS DEPENDING ON THE LEVEL OF PROTECTION AND SIZE.

**COLOURS AND FABRICS**  
STANDARD COLOURS ARE OLIVE, GREY, BLACK AND SAND. OTHER COLOUR ARE AVAILABLE ON REQUEST SUBJECT TO AVAILABILITY. OUTER FABRIC IS NOMEX®.



TITANIA LIGHTWEIGHT BOMB SUIT







PERFORMANCE AND WEIGHT  
FRAGMENTATION PERFORMANCE (STANAG 2020 17GR SP)

- ▶ HELMET - 700 M/SEC
- ▶ VISOR - 750 M/SEC
- ▶ SUIT - 450 M/SEC
- ▶ BLAST PLATES - 1900 M/SEC (V0)
- ▶ MITTENS - 450 M/SEC
- ▶ OVERBOOTS - 450 M/SEC

WEIGHTS

- ▶ HELMET WITH VISOR - LESS THAN 5 KG
- ▶ GARMENT - 15 KG
- ▶ BLAST PLATES - 6 KG





## ▶ OLYMPIA BOMB DISPOSAL SUIT

THE OLYMPIA BOMB SUIT IS UNITED SHIELD'S LATEST AND MOST ADVANCED DESIGN OF BOMB SUIT. IT IS A COMPLETE EOD/IEDD ENSEMBLE AND PROVIDES THE HIGHEST LEVELS OF PROTECTION FROM THE FOUR MAIN THREATS ENCOUNTERED BY EOD/IEDD OPERATORS OF FRAGMENTATION, OVERPRESSURE, IMPACT AND HEAT. THE OUTER MATERIAL IS CONSTRUCTED FROM CERTIFIED FLAME RETARDANT MATERIAL, SUCH AS NOMEX®, AND THIS MATERIAL CAN ALSO BE USED TO COVER THE BOMB SUIT HELMET, PROVIDING OPTIMAL PROTECTION FOR EOD/IEDD OPERATORS FROM THE FLAMMABILITY ASSOCIATED WITH BLASTS FROM EXPLOSIVE DEVICES. A KEY FEATURE OF THE OLYMPIA BOMB SUIT IS ITS ZONAL ARMOUR SYSTEM, WHICH PROVIDES OUTSTANDING BLAST PROTECTION WITH MAXIMUM MOBILITY, FLEXIBILITY AND COMFORT. THE HIGHEST PROTECTION LEVEL IS AFFORDED TO LIFE CRITICAL AREAS OF THE BODY, SUCH AS THE NECK, CHEST AND GROIN, WITH STANAG 2920 V50'S RANGING FROM 1,900 M/SEC TO 450 M/SEC. THESE LEVELS OF PROTECTION CAN BE ADJUSTED TO SUIT INDIVIDUAL CUSTOMERS NEEDS.

**ARMOUR SOLUTIONS**  
THE ARMOUR SOLUTIONS INCORPORATED INTO THE OLYMPIA BOMB SUIT ARE DESIGNED TO COUNTER SPECIFIC THREATS, AND INDEPENDENT BLAST AND FRAGMENTATION TEST DATA IS AVAILABLE ON REQUEST.

**COMPONENTS**  
THE OLYMPIA BOMB SUIT CONSISTS OF ADJUSTABLE TROUSERS WITH ELASTICATED BRACES, INTEGRAL GROIN AND LOWER ABDOMEN PROTECTION; OVER BOOTS; JACKET WITH INTEGRAL COLLAR, ADJUSTABLE SLEEVES AND QUICK RELEASE SYSTEM; HAND MITTS; THREE PART FRONTAL BLAST DECOUPLING PLATES; HIGH PERFORMANCE LIGHTWEIGHT HELMET WITH VISOR, BLOWER FOR DEMISTING/COOLING THE HELMET, HELMET MOUNTED SEARCH LIGHT, INTEGRAL COMMUNICATIONS SYSTEM, AND TWO ROBUST HARD WEARING BOXES FOR TRANSPORTATION, STORAGE AND PROTECTION. A LARGE OLYMPIA BOMB SUIT WEIGHS 33KGS (72LBS) INCLUSIVE OF: FRONTAL BLAST PLATES, JACKET, TROUSERS, GROIN PROTECTOR, HELMET, VISOR, OVERBOOTS AND HAND MITTS. WEIGHT IS DEPENDENT ON ZONAL PROTECTION LEVELS.



OLYMPIA BOMB DISPOSAL SUIT







**SIZES**  
A FULL SIZE RANGE IS AVAILABLE FROM SMALL TO X LARGE.

**COLOURS AND FABRICS**  
STANDARD COLOURS ARE NATO OLIVE GREEN, SAND, BLUE, GREY AND BLACK. MOST OTHER COLOURS ARE ALSO AVAILABLE, INCLUDING CAMOUFLAGE. SPECIALIST FABRICS CAN ALSO BE USED IF REQUIRED.

**OPTIONS**  
ACCESSORIES INCLUDE A COOLING SUIT, CBRN COMPATIBLE HELMET WITH AN OPEN FACE VISOR, CHEMICAL PROTECTION UNDERGARMENT, SELF CONTAINED BREATHING APPARATUS, MINE PROTECTED BOOTS, HARD WIRE AND WIRELESS COMMUNICATIONS SYSTEMS, AND HEAVY DUTY HIGH TENSILE CONTOURED BACK PROTECTOR.





# BULLETPROOF VESTS

Bulletproof vests, produced by Lubawa S.A., thanks to the use by various services, has been carefully checked and tested under different conditions.

---

▶ DELTA BASIC UN

---

▶ OPERATOR

---

▶ DELTA

---

▶ DEFENDER

---

▶ DEFENDER PRO

---





# DELTA BASIC UN

DELTA BASIC BULLETPROOF VEST IS INTENDED FOR, AMONG OTHERS, NON-ARMED DIPLOMATIC FORMATIONS, JOURNALISTS

LIGHT BULLETPROOF VEST WITH INTEGRATED POUCHES FOR CARRYING FOUR BALLISTIC PLATES

ELASTIC AND SOFT BALLISTIC INSERTS - MAXIMUM PROTECTION IN IIIA CLASS IN ACCORDANCE WITH NIJ STANDARD 0101.04

FOUR HARD BULLETPROOF PLATES (TWO SMALL SIDE PLATES AND TWO LARGE FRONT AND BACK PLATES) – MAXIMUM PROTECTION IN CLASS III AND IV IN ACCORDANCE WITH NIJ 0101.04

TWO SMALL EXTERNAL POUCHES IN THE FRONT OF THE VEST FOR HARD BULLETPROOF SIDE PLATES

TWO LARGE INTERNAL POUCHES IN THE FRONT AND IN THE BACK OF THE VEST FOR LARGE HARD BULLETPROOF PLATES

ERGONOMICS OF USE IS ENSURED THROUGH A SYSTEM OF ELASTIC SIDE STRAPS INSIDE AND OUTSIDE THE VEST, AND THROUGH THE USE OF PADDED MESH FOR INCREASED VENTILATION

THE INSIDE ELASTIC STABILITY BELT ENSURES PROPER ADJUSTMENT OF THE VEST AND RELIEVING PRESSURE ON SHOULDERS BY DISTRIBUTING PART OF ITS WEIGHT TO HIPS

PROTECTION SURFACE OF A FULLY COMPLETE VEST WITH THE BASIC SOFT BALLISTIC PACKAGE EQUALS 0.43 M<sup>2</sup>

LOW WEIGHT, E.G. THE VEST IN COMPLETE VERSION IN PROTECTION CLASS IIIA IN ACCORDANCE WITH NIJ STANDARD 0101.04 WEIGHS ONLY 3.8 KG









# ➤ OPERATOR

INTEGRATED BULLETPROOF VEST OPERATOR IS DESIGNED AMONG OTHERS FOR MSWIA SPECIAL FORCES OFFICERS

MOLLE/PALS SYSTEM FOR ATTACHING POUCHES AND ACCESSORIES

EASY TO USE MODULAR CONFIGURATION ALLOWING THE USE OF FOUR HARD BALLISTIC PLATES AT THE FRONT, BACK AND ON BOTH SIDES, WITH ADJUSTABLE FRONT AND BACK SEGMENTS

ERGONOMIC DESIGN ALLOWS THE USER TO SHIFT PART OF THE LOAD TO HIPS AND AN ELASTIC STRAP ADJUSTMENT SYSTEM, INCORPORATION OF SPACER FABRIC FOR BETTER VENTILATION

ADDITIONALLY ENHANCED BY THE USE OF A WIDE, ELASTIC EXTERNAL STRAP CONNECTING BOTH SIDES OF THE VEST UNDERNEATH THE FRONT PANEL, EQUIPPED WITH HANDLES LARGE ENOUGH TO BE USED WHEN WEARING GLOVES

ADDITIONAL SAFETY MEASURES, I.E. AN EVACUATION GRIP HOLD ALLOWING EASY EXTRACTION OF AN INJURED PERSON FROM A HAZARDOUS ENVIRONMENT

DEDICATED EQUIPMENT DESIGNED ESPECIALLY TO MEET SPECIFIC USER NEEDS: ANTI-SLIP SHOULDER GUN PAD, WATER BOTTLE POUCH AND A POSSIBILITY OF INSTALLING A PTT BUTTON

OPTIONAL, ADDITIONAL EQUIPMENT, I.E. LOW-PROFILE BRACES, THIGH PANELS, BUNGEE TYPE MACHINE GUN BELT

LOW WEIGHT, E.G. A PROTECTION CLASS IIIA IN ACCORDANCE WITH NIJ 0101.04 VEST WITH A SET OF ADDITIONAL ELEMENTS, SIZE L, WEIGHTS ONLY 5,3 KG









# DELTA

BULLETPROOF VEST DELTA IS INTENDED FOR SECURITY GUARD SERVICES PROTECTING MILITARY AREAS

MOLLE/PALS SYSTEM FOR ATTACHING POUCHES AND ACCESSORIES

HIGH SAFETY LEVEL DUE TO SOFT BALLISTIC INSERTS

UNIVERSAL USE IN ALL WEATHER CONDITIONS AND CAN BE WORN ALL YEAR ROUND ON TOP OF ALL TYPES OF CLOTHING

FREE MOVEMENT DUE TO ANATOMICAL DESIGN AND SECURE FASTENING USING ELASTIC STRAPS AND FULL ADJUSTMENT

SIGNS CAN BE ATTACHED AT THE FRONT AND BACK OF THE VEST USING VELCRO FASTENING

A WIDE RANGE OF ADDITIONAL ACCESSORIES ALLOWING FULL CUSTOMIZATION







# DEFENDER

BULLETPROOF VEST DEFENDER IS DESIGNED FOR ARMED UNIFORMED FORMATIONS

MOLLE/PALS SYSTEM FOR ATTACHING POUCHES AND ACCESSORIES

VELCRO FASTENERS ON ARMS AND SIDES ENABLE THE USER TO RAPIDLY PUT ON AND REMOVE THE VEST

ERGONOMIC DESIGN FOR USER COMFORT, INCLUDES AN ELASTIC STRAP ADJUSTMENT SYSTEM AND A SPACER NET FOR BETTER VENTILATION

VERY LOW FLAMMABILITY THANKS TO ADVANCED MATERIALS

ADDITIONAL ELEMENTS ATTACHED TO THE VEST: UNDERBELLY PROTECTION, A THREE-PIECE COLLAR AND SHOULDER PROTECTION

VELCRO-ATTACHABLE SIGNS AT THE FRONT AND BACK OF THE VEST









# DEFENDER PRO

DEFENDER PRO BULLETPROOF VEST IS DESIGNED FOR, AMONG OTHERS, UNIFORMED ARMED FORMATIONS

LIGHTWEIGHT BULLETPROOF VEST INTEGRATED WITH A PLATFORM FOR CARRYING TACTICAL EQUIPMENT

MOLLE/PALS SYSTEM FOR ATTACHING FUNCTIONAL POUCHES AND ACCESSORIES

SOFT AND FLEXIBLE BALLISTIC INSERTS – MAXIMUM PROTECTION AS REGARDING K2 CLASS, ACCORDING TO PN-V-87000:2011 STANDARD

TWO HARD ARMOUR PLATES – MAXIMUM PROTECTION AS REGARDING LEVEL IV ACCORDING TO NIJ 0101.04 STANDARD

QUICK TO PUT ON AND REMOVE THANKS TO THE USE OF VELCRO STRAPS ON ARMS AND SIDE PARTS

THE ERGONOMICS OF USE ARE ACHIEVED, AMONG OTHERS, THROUGH THE USE OF ELASTIC STRAP ADJUSTMENT SYSTEM AND SPACER NET FOR BETTER VENTILATION

INTERNAL ELASTIC STABILIZATION STRAP ENABLES THE USER TO APPROPRIATELY MATCH THE VEST AND RELIEVE THE ARMS

LOW FLAMMABILITY THROUGH THE USE OF DEDICATED MATERIALS

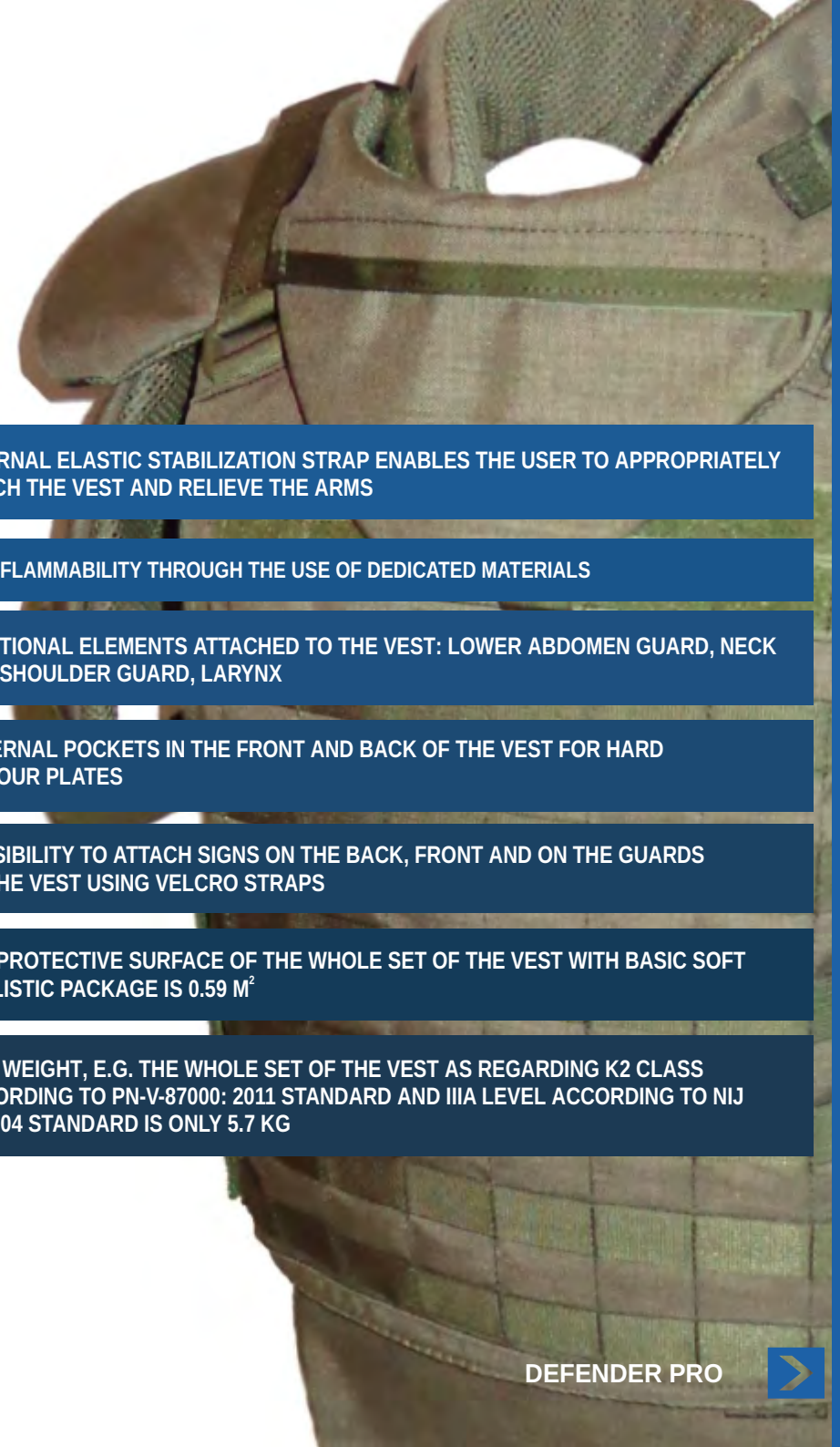
ADDITIONAL ELEMENTS ATTACHED TO THE VEST: LOWER ABDOMEN GUARD, NECK AND SHOULDER GUARD, LARYNX

EXTERNAL POCKETS IN THE FRONT AND BACK OF THE VEST FOR HARD ARMOUR PLATES

POSSIBILITY TO ATTACH SIGNS ON THE BACK, FRONT AND ON THE GUARDS OF THE VEST USING VELCRO STRAPS

THE PROTECTIVE SURFACE OF THE WHOLE SET OF THE VEST WITH BASIC SOFT BALLISTIC PACKAGE IS 0.59 M<sup>2</sup>

LOW WEIGHT, E.G. THE WHOLE SET OF THE VEST AS REGARDING K2 CLASS ACCORDING TO PN-V-87000: 2011 STANDARD AND IIIA LEVEL ACCORDING TO NIJ 0101.04 STANDARD IS ONLY 5.7 KG









# BALLISTIC INSERTS

Lubawa S.A. offers a range of durable ballistic inserts for personal protection. Lightweight ballistic inserts provide effective protection and excellent strength and mobility during difficult operations. These products include a full range of ballistic protection in accordance with international standards.



# ➤ BALLISTIC INSERTS

## GUARANTEE PERIOD

THE PLATE IS EXPECTED TO PRESERVE ITS CONFORMITY WITH THE SPECIFICATIONS FOR A PERIOD OF AT LEAST 5 YEARS DURING STORAGE FROM THE DATE OF DELIVERY, PROVIDED THAT:

THE PRODUCT IS STORED UNDER DRY CONDITIONS AT NORMAL AMBIENT TEMPERATURE

THE PRODUCT IS STORED VERTICALLY

THE PRODUCT HAS NOT BEEN SUBJECTED TO PEAK TEMPERATURE EXCEEDING 70°C

THE PRODUCT IS PROTECTED AGAINST LONG TERM DIRECT EXPOSURE TO SUN LIGHT





LEVELS OF PROTECTION WHEN USED IN CONJUNCTION WITH A NIJ 0101.04 IIIA VEST AT A TEST TEMPERATURE OF 20°C

	COMPOSITION:	COVER:	DIMENSIONS:	THICKNESS:	WEIGHT:	SHAPE:	
CS-360 IC	HPPE	BLACK TEXTILE OR TENCATE ROSIST®	250 X 300MM ± 2MM	20 MM ± 1MM FOR TEXTILE COVER 21.5 MM ± 1MM FOR ROSIST®	1.4 KG ± 0.1KG FOR TEXTILE COVER 1.5 KG ± 0.1KG FOR ROSIST®	FLAT, SINGLE OR MULTI-CURVED SHAPE	NIJ 0101.06, LEVEL III 5.56 X 45 NATO BALL (3.6 G, 980 M/S +/- 20 M/S)
CX-360 IC	DSM DYNEEMA®	BLACK TEXTILE OR TENCATE ROSIST®	250 X 300MM ± 2MM	17 MM ± 1MM FOR TEXTILE COVER 18 MM ± 1MM FOR ROSIST®	1.15 KG ± 0.1KG FOR TEXTILE COVER 1.25 KG ± 0.1KG FOR ROSIST®	FLAT, SINGLE OR MULTI-CURVED SHAPE	NIJ 0101.06, LEVEL III 5.56 X 45 NATO BALL (3.6 G, 980 M/S +/- 20 M/S)
CXP-360 IC	DSM DYNEEMA®	BLACK TEXTILE OR TENCATE ROSIST®	250 X 300MM ± 2MM	15 MM ± 1MM FOR TEXTILE COVER 16 MM ± 1MM FOR ROSIST®	0,92 KG ± 0.1KG FOR TEXTILE COVER 0,97 KG ± 0.1KG FOR ROSIST®	FLAT, SINGLE OR MULTI-CURVED SHAPE	NIJ 0101.06, LEVEL III 5.56 X 45 NATO BALL (3.6 G, 980 M/S +/- 20 M/S)
CS-400 IC	HPPE	BLACK TEXTILE OR TENCATE ROSIST®	250 X 300MM ± 2MM	24 MM ± 1MM FOR TEXTILE COVER 25 MM ± 1MM FOR ROSIST®	1,65 KG ± 0.1KG FOR TEXTILE COVER 1,75 KG ± 0.1KG FOR ROSIST®	FLAT, SINGLE OR MULTI-CURVED SHAPE	-7.62 X 39 AK 47 MSC (720 +/- 10 M/S) -NIJ 0101.04, LEVEL III 5.56 X 45 NATO BALL (3.6 G, 980 M/S +/- 20 M/S)
CX-400 IC	DSM DYNEEMA®	BLACK TEXTILE OR TENCATE ROSIST®	250 X 300MM ± 2MM	18 MM ± 1MM FOR TEXTILE COVER 19 MM ± 1MM FOR ROSIST®	1,2 KG ± 0.1KG FOR TEXTILE COVER 1,3 KG ± 0.1KG FOR ROSIST®	FLAT, SINGLE OR MULTI-CURVED SHAPE	-7.62 X 39 AK 47 MSC (720 +/- 10 M/S) -NIJ 0101.04, LEVEL III -5.56 X 45 NATO BALL (3.6 G, 980 M/S +/- 20 M/S)
CXP-400 IC	DSM DYNEEMA®	BLACK TEXTILE OR TENCATE ROSIST®	250 X 300MM ± 2MM	15 MM ± 1MM FOR TEXTILE COVER 16 MM ± 1MM FOR ROSIST®	0,98 KG ± 0.1KG FOR TEXTILE COVER 1,1 KG ± 0.1KG FOR ROSIST®	FLAT, SINGLE OR MULTI-CURVED SHAPE	-7.62 X 39 AK 47 MSC (720 +/- 10 M/S) -NIJ 0101.04, LEVEL III
CS-800 IC	MONOLITHIC CERAMIC HPPE BACKING	BLACK TEXTILE	250 X 300MM ± 2MM	18 MM ± 1MM	2.95 KG ± 0.1KG	FLAT, SINGLE OR MULTI-CURVED SHAPE	-NIJ 0101.04, LEVEL IV (1 SHOT) -7.62 X 54 R API B32 (850 M/S +/- 10 M/S, 1 SHOT) -7.62 X 51 P80 (830 M/S +/- 10 M/S) -NIJ 0101.04, LEVEL III (6 SHOTS)
CX-800 IC	HPPE BACKING	TENCATE ROSIST®	250 X 300MM ± 2MM	21 MM ± 1MM	2.5KG ± 0.1KG	MULTI-CURVE SHAPE	- NIJ 0101.04, LEVEL IV - 7.62 X 54 R API B32 (854 M/S +/- 10 M/S) - 5.56 X 45 NATO BALL (980 M/S +/- 20 M/S) - NIJ 0101.04, LEVEL III - KEEPS ITS PERFORMANCE AFTER 6 DROPS FROM 1.5 M ON CONCRETE FLOOR
CXP-800 IC	MONOLITHIC B4C CERAMIC HPPE BACKING	TENCATE ROSIST®	218 X 295MM ± 2MM	21 MM ± 1MM	2.2KG ± 0.1KG	MULTI-CURVE SHAPE	- NIJ 0101.04, LEVEL IV - 7.62 X 54 R API B32 (854 M/S +/- 10 M/S) - 5.56 X 45 NATO BALL (980 M/S +/- 20 M/S) - NIJ 0101.04, LEVEL III - KEEPS ITS PERFORMANCE AFTER 6 DROPS FROM 1,5 M ON CONCRETE FLOOR



#### HANDLING

- ❗ DO NOT SIT ON THE INSERT
- ❗ DO NOT DROP THE INSERT ON THE FLOOR AND AVOID OTHER HARD SHOCK(S)
- ❗ DO A VISUAL INSPECTION OF THE INSERT EVERY SIX-MONTH
- ❗ IN CASE OF VISUAL DAMAGES, SEND THE INSERT BACK FOR INSPECTION / REPAIR
- ❗ DO ONLY CLEAN WITH PURE WATER OR MILD SOAP





# HELMETS

Helmets, provided by Lubawa S.A., meet all the requirements of modern bullet-proof helmets and provide maximum protection for the user's head on the modern battlefield.

---

▶ **UN BLUE/MCH-MID**

---



# UN BLUE/ MCH-MID

ULTRA-LIGHTWEIGHT HELMET FOR MAXIMUM PROTECTION OF THE HEAD ON THE MODERN BATTLEFIELD.

BULLETPROOF VEST DEFENDER IS DESIGNED FOR ARMED UNIFORMED FORMATIONS

MOLLE/PALS SYSTEM FOR ATTACHING POUCHES AND ACCESSORIES

VELCRO FASTENERS ON ARMS AND SIDES ENABLE THE USER TO RAPIDLY PUT ON AND REMOVE THE VEST

ERGONOMIC DESIGN FOR USER COMFORT, INCLUDES AN ELASTIC STRAP ADJUSTMENT SYSTEM AND A SPACER NET FOR BETTER VENTILATION

VERY LOW FLAMMABILITY THANKS TO ADVANCED MATERIALS

ADDITIONAL ELEMENTS ATTACHED TO THE VEST: UNDERBELLY PROTECTION, A THREE-PIECE COLLAR AND SHOULDER PROTECTION

VELCRO-ATTACHABLE SIGNS AT THE FRONT AND BACK OF THE VEST

SKYDEX CARTRIDGES PROVIDE INCREASED PROTECTION AGAINST DYNAMIC DEFLECTION OF THE HELMET, IMPROVE COMFORT, ARE RESISTANT TO LOW AND HIGH TEMPERATURES. THE INSERTS CAN BE WASHED IN REGULAR DETERGENTS, THE INSERTS DO NOT CAUSE ALLERGIC REACTIONS. THE HELMET IS RESISTANT TO WATER. MCH-MID LUBAWA IS AVAILABLE IN DIFFERENT COLORS.









# GAS MASKS

The use of gas masks is particularly important in the environments potentially exposed to contamination with harmful substances. They are used for protection of respiratory tract, eyes and skin of the face against toxic warfare agents and radioactive dust, as well as pathogenic bacteria and viruses.

---

## ▶ CBRN MASK

---



# CBRN MASK

WIDE FIELD OF VISION (> 94%) WITH REDUCED MISTING

LOW BREATHING RESISTANCE

AEROSOL EFFICIENCY: > 99.007%

COMFORT WITH PROLONGED WEAR

EFFICIENT VOICE TRANSMISSION (CAN BE EQUIPPED TO HOUSE RADIO COMMS)

SIDE MOUNTED FILTER FOR EASIER WEAPONS USE

INTEGRATED DRINKING TUBE FOR NBCR HYDRATATION SYSTEM







SPECIFICATION  
CHEMICAL AGENT

	CONTAMINATION	PROTECTION TIME
VX LIQUID MUSTARD (CM)	10 G/M <sup>2</sup>	> 24H
NERVE GASES	1000 MG/M <sup>3</sup> ; 50 L/MIN	35 MIN
HCN	2000 MG/M <sup>3</sup> ; 50 L/MIN	12,5 MIN



# MEDICAL BACKPACKS

The backpacks are dedicated primarily to medical and paramedical services. High quality of materials ensures durability and reliability even in the most extreme weather conditions. The backpacks have a large number of add-ons and can be further equipped according to specific needs.

---

▶PSP R1 MEDICAL BAG

---

▶GECKO MED. 45L

---

▶MED. 25L

---



# ➤ PSP R1 MEDICAL BAG

PSP R1 MEDICAL BAG MEDICAL BAG DESIGNED ESPECIALLY FOR MEDICAL SERVICES. SPACIOUS MAIN COMPARTMENT OPENS WITH A ZIPPER RUNNING AROUND THE ENTIRE BAG. INNER PART DIVIDED INTO SIX COMPARTMENTS FASTENED WITH A ZIPPER. POCKETS ATTACHED TO THE BASE BY MEANS OF VELCRO STRAPS ALLOW FOR QUICK ATTACHING AND DETACHING, AS WELL AS FOR EASY TRANSPORT USING THE HANDLES. THE MODULAR DESIGN OF THE POCKETS ALLOWS FOR A FLEXIBLE CONFIGURATION OF THE CONTENTS OF THE BAG. EACH COMPARTMENT ENABLES CLEAR SEGREGATION OF EQUIPMENT AND EASY LOCATING OF THE NECESSARY EQUIPMENT THROUGH TRANSPARENT COVERS. INSIDE A SPECIAL SPACE FOR OXYGEN TANK. MESH POCKETS ON THE SIDE WALLS FOR SMALL ITEMS. THREE COMPARTMENTS ON THE OUTSIDE, FASTENED WITH A ZIPPER. OUTER POCKETS ATTACHED TO THE BASE WITH ZIPPERS THAT ALLOW FOR QUICK ATTACHING AND DETACHING, AS WELL AS FOR EASY TRANSPORT USING THE HANDLES. ADDITIONAL FOUR POCKETS ON THE SIDE WALLS, FASTENED WITH A ZIPPER. THE BOTTOM OF THE BAG IS REINFORCED, RESISTANT TO ABRASION AND WATERPROOF DUE TO THE RUBBERISED FABRIC. IT IS ADDITIONALLY SECURED WITH RUBBER FEET. THE BACK OF THE BACKPACK IS LINED WITH FOAM. VIVID DETAILS AND PRISMATIC TAPE MARKING ENSURE SAFETY AND VISIBILITY ALSO DURING THE RESCUE OPERATION AT NIGHT.

## CARRYING SYSTEM:

**BACKPACK** – ADJUSTABLE, FOAM-PADDED, LINED WITH BREATHABLE SPACER FABRIC SHOULDER STRAPS AND WAIST BELT ALLOW FOR COMFORTABLE BACKPACK CARRYING AND MAKE IT FIT TO THE BODY. SHOULDER STRAPS CAN BE FASTENED TOGETHER WITH A STERNUM STRAP.

**BAG** – TWO HANDLES MADE OF PLASTIC ALLOW THE USER TO CARRY THE BACKPACK IN HAND (TOP AND SIDE HANDLE)

**CASE** – WHEELS MOUNTED ON THE BOTTOM OF THE BACKPACK AND A HANDLE ALLOW FOR COMFORTABLE PULLING OF THE BACKPACK ON THE GROUND

THE THREE METHODS OF CARRYING THE BACKPACK ALLOW THE EMERGENCY RESPONDER TO WORK IN EVERY ENVIRONMENT, IN WHICH THE RESCUE OPERATION TAKES PLACE, AS WELL AS TO WALK A LONG DISTANCE WITH THE LOADED BAG.





**MATERIAL:**

BACKPACK MADE OF CORDURA 1100. ROBUST BUCKLES, WIDE YKK ZIPPERS AND SLIDERS GUARANTEE RELIABLE AND SMOOTH OPENING OF COMPARTMENTS AND POCKETS. RUBBER BANDS FOR SECURING SMALLER ITEMS IN PLACE. BACKPACK FULLY LINED WITH FOAM.

**USED TECHNOLOGY:**

BAG MADE BY MEANS OF SEWING. SMOOTH SEWN SURFACES, WITH NO WRINKLES OR BROKEN STITCHES.

- ✦ WIDTH: 400 MM
- ✦ DEPTH: 320 MM
- ✦ HEIGHT: 800 MM
- ✦ CAPACITY: 100 L







# GECKO MED. 45 L

GECKO MED. 45 DEDICATED FOR MEDICAL AND RESCUE PERSONNEL OF ALL FORMATIONS

THIS HEAVY DUTY RUCKSACK IS MADE OF CORDURA® 1100

NEW INNOVATIVE CONSTRUCTION SOLUTIONS, MATERIALS OF THE HIGHEST QUALITY PROVIDE DURABILITY AND RELIABILITY IN ALL EXTREME CONDITIONS

DISTANCE NET PROVIDE PROPER VENTILATION AND COMFORT OF CARRYING

CAPACITY OF 45 LITRES

SIZE 59X32X26 CM - 23.2/12.6/10.2 IN

PROVIDES SECURE CARRYING AND RAPID ACCESS TO MEDICAL EQUIPMENT

RUCKSACK EQUIPPED WITH MAIN COMPARTMENT SUITABLE FOR MODULAR AND OPTIMAL CONFIGURATION OF POUCHES, AMPOULE BAGS AND SACHETS AND A POCKET DEDICATED FOR ORTHOPEDIC COLLARS

EQUIPPED WITH MOLLE/PALS SYSTEM DEDICATED FOR SECURE CARRYING OF ADDITIONAL EQUIPMENT SUCH AS WATER RESERVOIRS OR STRETCHERS

MODULAR CONSTRUCTION OF ALL POUCHES, POCKETS AND AMPOULE BAGS DEDICATED FOR OPTIMAL CONFIGURATION OPPORTUNITIES AND RAPID ACCESS TO ALL EQUIPMENT











## MED. 25 L

SPECIAL BACKPACK OF 25 LITRES DEDICATED TO CARRY EQUIPMENT ON SHORT TACTICAL MISSIONS

BACKPACK HAS MAIN COMPARTMENT AND FOUR OUTER POCKETS

POCKET DEDICATED FOR HYDRATION SYSTEM

ERGONOMIC STRAPS WITH BUCKLE QUICK RELEASE SYSTEM

REMOVABLE AND ADJUSTABLE HIP-BELT

BACK PANEL CAN BE MADE OF DISTANCE NET FOR PROPER VENTILATION OR CORDURA® FOR MAXIMUM DURABILITY

BEST MATERIALS OF RECOGNIZED QUALITY (CORDURA® 1100, DISTANCE NET-SPACER FABRIC)











# RIB BOATS

The boats are designed for the purposes of life and health saving operations as well as for patrolling and evacuation from the areas which are at risk from flooding. In the view of the variety of conditions in which the boats are to be used, Lubawa S.A. boats can be characterised by the modularity of deck structure and equipment, which enable the boats to be used for life and health saving, transport and water tourism purposes.

---

▶LITEX 580

---

▶LITEX 680

---



## > LITEX 580

LITEX 580 IS A COMPACT RIB-TYPE BOAT WHOSE SEAKEEPING ABILITIES ALLOW IT TO BE USED AT SEA. IS DESIGNED IN A WAY THAT MAXIMISES ITS FULL POTENTIAL. THE SIZE OF THE BOAT ALLOWS IT TO BE TRANSPORTED BY ROAD, BY A DRIVER WITH A "B" CATEGORY DRIVING LICENSE. HIGH STABILITY OF THE BOAT GUARANTEES ITS SAFETY AT SEA. THE TUBES ARE MADE OF HYPALON 1670 DTEX, WHICH GUARANTEES STRENGTH OF THE BOAT AND RESISTANCE TO WEATHER.

ITS INNOVATIVE HULL DESIGN PROVIDES HIGH LOAD CAPACITY. LITEX 580 IS A SPECIFIC-PURPOSE BOAT USED FOR RESCUE OPERATIONS AND IS TAILORED FOR THE NEEDS OF THE FIRE SERVICE. DURING TRANSPORT, THE PUMP CAN DRAW WATER AND TRANSMIT IT BY HOSE TO A TANK OR CAR. IT IS ALSO POSSIBLE TO CARRY OUT FIRE-FIGHTING OPERATIONS DIRECTLY FROM THE BOAT.

- ▶ OVERALL LENGTH LOA: 5,8 M
- ▶ OVERALL LENGTH OF DECK: 3,4 M
- ▶ OVERALL WIDTH OF RIB: 2,50 M
- ▶ OVERALL WIDTH: 1,50 M
- ▶ DISPLACEMENT: 1,22 M<sup>3</sup>
- ▶ DRAFT: 0,4 M
- ▶ WEIGHT (W/OUT ENGINE): 400 KG
- ▶ MAXIMUM LOAD CAPACITY: 1224 KG
- ▶ MAXIMUM NUMBER OF PERSONS: 8
- ▶ MINIMUM ENGINE POWER: 80 KM







# RIB BOATS





# > LITEX 680

LITEX 680 IS A COMPACT RIB-TYPE BOAT WHOSE SEAKEEPING ABILITIES ALLOW IT TO BE USED AT SEA. IS DESIGNED IN A WAY THAT MAXIMISES ITS FULL POTENTIAL. THE SIZE OF THE BOAT ALLOWS IT TO BE TRANSPORTED BY ROAD, BY A DRIVER WITH A "B" CATEGORY DRIVING LICENSE. HIGH STABILITY OF THE BOAT GUARANTEES ITS SAFETY AT SEA. THE TUBES ARE MADE OF HYPALON 1670 DTEX, WHICH GUARANTEES STRENGTH OF THE BOAT AND RESISTANCE TO WEATHER.

ITS INNOVATIVE HULL DESIGN PROVIDES HIGH LOAD CAPACITY. LITEX 680 IS A SPECIFIC-PURPOSE BOAT USED FOR RESCUE OPERATIONS AND IS TAILORED FOR THE NEEDS OF THE FIRE SERVICE. DURING TRANSPORT, THE PUMP CAN DRAW WATER AND TRANSMIT IT BY HOSE TO A TANK OR CAR. IT IS ALSO POSSIBLE TO CARRY OUT FIRE-FIGHTING OPERATIONS DIRECTLY FROM THE BOAT.

LITEX 680 IS COMPATIBLE FOR TRANSPORTING A PUMP. THANKS TO A SYSTEM OF WATER SUCTION IT CAN DRAW IN WATER WHILE MOVING IN WATER AND TRANSFER VIA A HOSE TO A CAR OR TANK. IT IS ALSO POSSIBLE TO CARRY OUT A FIREFIGHTING OPERATION DIRECTLY FROM A BOAT.







- ❑ OVERALL LENGTH LOA: 6,8 M
- ❑ OVERALL LENGTH OF DECK: 4,4 M
- ❑ OVERALL WIDTH OF RIB: 2,50 M
- ❑ OVERALL WIDTH: 1,50 M
- ❑ DISPLACEMENT: 1,33 M<sup>3</sup>
- ❑ DRAFT: 0,4 M
- ❑ WEIGHT (W/OUT ENGINE): 460 KG
- ❑ MAXIMUM LOAD CAPACITY: 1410 KG
- ❑ MAXIMUM NUMBER OF PERSONS: 10
- ❑ MINIMUM ENGINE POWER: 140 KM
- ❑ MAXIMUM ENGINE POWER: 186 KM





**SAFETY  
AND SECURITY  
GUARANTEED**